



THE UNIVERSITY of EDINBURGH
 School of Mathematics
 PRESENTS



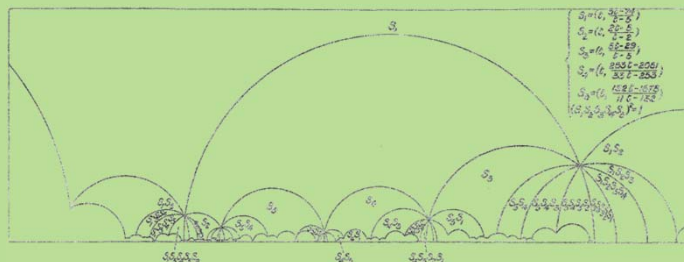
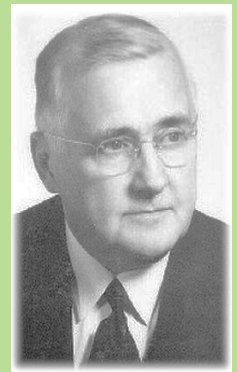
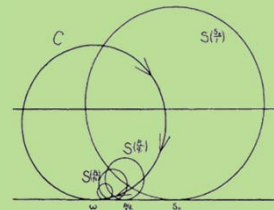
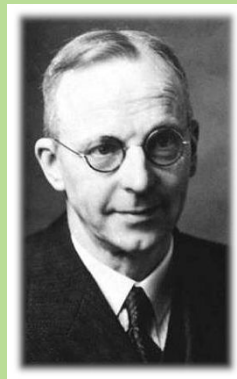
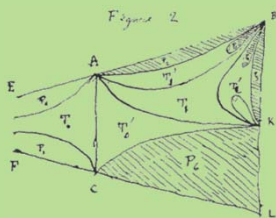
The 2012 Sir Edmund Whittaker Colloquium

Prof John Stillwell

(Monash University & University of San Francisco)

22nd May: From Poincaré to Whittaker to Ford

23rd May: Poincaré and the early history of 3-manifolds



Lectures commence at 4pm, Lecture Room A, James Clerk Maxwell Building King's Buildings
 Reception to follow on the 22 May