

HOMOLOGY MANIFOLD BORDISM

HEATHER JOHNSTON AND ANDREW RANICKI

ABSTRACT. The Bryant-Ferry-Mio-Weinberger surgery exact sequence for compact *ANR* homology manifolds of dimension ≥ 6 is used to obtain transversality, splitting and bordism results for homology manifolds, generalizing previous work of Johnston.

First, we establish homology manifold transversality for submanifolds of dimension ≥ 7 : if $f : M \rightarrow P$ is a map from an m -dimensional homology manifold M to a space P , and $Q \subset P$ is a subspace with a topological q -block bundle neighborhood, and $m - q \geq 7$, then f is homology manifold s -cobordant to a map which is transverse to Q , with $f^{-1}(Q) \subset M$ an $(m - q)$ -dimensional homology submanifold.

Second, we obtain a codimension q splitting obstruction $s_Q(f) \in LS_{m-q}(\Phi)$ in the Wall LS -group for a simple homotopy equivalence $f : M \rightarrow P$ from an m -dimensional homology manifold M to an m -dimensional Poincaré space P with a codimension q Poincaré subspace $Q \subset P$ with a topological normal bundle, such that $s_Q(f) = 0$ if (and for $m - q \geq 7$ only if) f splits at Q up to homology manifold s -cobordism.

Third, we obtain the multiplicative structure of the homology manifold bordism groups $\Omega_*^H \cong \Omega_*^{TOP}[L_0(\mathbb{Z})]$.

CONTENTS

Introduction

1. Homology manifold surgery and bordism
 2. Homology submanifold transversality up to bordism
 3. Codimension q splitting of homology manifolds
 4. Homology submanifold transversality up to s -cobordism
 5. Dual transversality for homology manifolds
 6. The dual transversality obstruction
 7. The multiplicative structure of homology manifold bordism
- References

INTRODUCTION

Homology manifolds are spaces with the local homology properties of topological manifolds, but not necessarily their geometric properties such as transversality. The results of Johnston [6] on the bordism and transversality properties of high-dimensional homology manifolds are extended here using the methods of surgery

Received by the editors March 23, 1998 and, in revised form, September 3, 1999.

1991 *Mathematics Subject Classification.* Primary 57P05, Secondary 19J25.

Key words and phrases. Homology manifolds, bordism, transversality, surgery.

This work was carried out in connection with the first named author's EPSRC Visiting Fellowship in Edinburgh in August, 1997.

theory. The extent to which transversality holds in a homology manifold is a measure of how close it is to being a topological manifold. It is not possible to investigate transversality in homology manifolds by direct geometric methods – as in [6] we employ bordism and surgery instead.

We start with a brief recollection of transversality for differentiable manifolds. Suppose that P^n is an n -dimensional differentiable manifold and $Q^{n-q} \subset P^n$ is a codimension q submanifold with a q -plane normal bundle

$$\nu_{Q \subset P} : Q \rightarrow BO(q) .$$

A smooth map $f : M \rightarrow P$ from an m -dimensional differentiable manifold M^m is transverse to $Q \subset P$ if the inverse image of Q is a codimension q submanifold

$$N^{m-q} = f^{-1}(Q) \subset M^m$$

with normal q -plane bundle the pullback of $\nu_{Q \subset P}$ along $g = f| : N \rightarrow Q$

$$\nu_{N \subset M} = g^* \nu_{Q \subset P} : N \rightarrow BO(q) .$$

The classical result of Thom is that every map $f : M^m \rightarrow P^n$ is homotopic (by a small homotopy) to a smooth map which is transverse to $Q \subset P$. This result was proved by direct analytic methods.

Topological manifolds also have transversality, but the proof is very indirect, relying heavily on surgery theory – see Kirby and Siebenmann [8] (III, §1), Marin [10] and Quinn [13]. Instead of vector bundles it is necessary to work with normal microbundles, although we shall use the formulation in terms of the topological block bundles of Rourke and Sanderson [17].

The essential aspect of transversality is that a submanifold has a nice normal (vector or block) bundle, as formalized in the following definition.

Definition A *codimension q bundle subspace* (Q, R, ξ) ($q \geq 1$) of a space P is a subspace $Q \subset P$ together with a topological q -block bundle

$$(D^q, S^{q-1}) \rightarrow (E(\xi), S(\xi)) \rightarrow Q$$

such that

$$P = E(\xi) \cup_{S(\xi)} R$$

where $R = \overline{P \setminus E(\xi)}$. When R and ξ are clear we say that Q is a codimension q bundle subspace of P .

Topological q -block bundles over a space Q are classified by the homotopy classes of maps from Q to a classifying space $\widetilde{BT\tilde{O}P}(q)$, so we write such a bundle ξ as a map

$$\xi : Q \rightarrow \widetilde{BT\tilde{O}P}(q) .$$

If P is an n -dimensional topological manifold and $Q \subset P$ is a triangulable locally flat codimension q submanifold with $n - q \geq 5$ or $q \leq 2$ then Q is a codimension q bundle subspace of P with

$$\xi = \nu_{Q \subset P} : Q \rightarrow \widetilde{BT\tilde{O}P}(q)$$

a normal topological q -block bundle, by Theorem 4.9 of Rourke and Sanderson [17]. (Hughes, Taylor and Williams [5] obtained a topological regular neighborhood theorem for arbitrary locally flat submanifolds in a manifold of dimension ≥ 5 ,

in which the neighborhood is the mapping cylinder of a manifold approximate fibration).

In the applications of codimension q bundle subspaces $(Q, R, \xi) \subset P$ we shall only be concerned with the case when P is a finite CW complex and $Q, R \subset P$ are subcomplexes.

Definition (Submanifold transversality)

Let P be a space with a codimension q bundle subspace (Q, R, ξ) .

(i) A map $f : M \rightarrow P$ from an m -dimensional manifold M is *transverse* to $Q \subset P$ if the inverse image of Q

$$N^{m-q} = f^{-1}(Q) \subset M^m$$

is a locally flat codimension q submanifold with the pullback normal bundle.

(ii) A map $f : M \rightarrow P$ is *s-transverse* to $Q \subset P$ if it is *s-cobordant* to a transverse map.

Of course, the submanifolds of the manifold M and bundles in the above definitions are understood to be in the same category as M itself. For simplicity, we shall only be considering compact oriented manifolds.

An *m-dimensional homology manifold* M is a finite-dimensional *ANR* such that for each $x \in M$

$$H_r(M, M \setminus \{x\}) = \begin{cases} \mathbb{Z} & \text{if } r = m \\ 0 & \text{if } r \neq m \end{cases}.$$

We shall say that an m -dimensional homology manifold M has *codimension q s-transversality* if every map $f : M \rightarrow P$ is *s-transverse* to every codimension q bundle subspace $Q \subset P$. (It is unknown if the analogue of the topological *s-cobordism* theorem holds for homology manifolds).

An m -dimensional homology manifold M is *resolvable* if there exists a *CE* map $h : M_{TOP} \rightarrow M$ from an m -dimensional topological manifold M_{TOP} . (Roughly speaking, a *CE* map is a map with contractible point inverses). Resolvable homology manifolds have codimension q *s-transversality* for all $q \geq 1$: if $f : M \rightarrow P$ is a map from a resolvable m -dimensional homology manifold and $Q \subset P$ is a codimension q bundle subspace, then the mapping cylinder of h is a homology manifold *s-cobordism*

$$(g; f, f_{TOP}) : (W; M, M_{TOP}) \rightarrow P$$

from f to a map $f_{TOP} : M_{TOP} \rightarrow P$ which can be made (topologically) transverse to $Q \subset P$.

Quinn [11] used controlled surgery to prove that for $m \geq 6$ an m -dimensional homology manifold M with codimension m *s-transversality* is resolvable. The *resolution obstruction* of Quinn [12]

$$i(M) \in H_m(M; L_0(\mathbb{Z}))$$

is such that $i(M) = 0$ if (and for $m \geq 6$ only if) M is resolvable; for connected M the obstruction takes values in $H_m(M; L_0(\mathbb{Z})) = \mathbb{Z}$. The invariant $i(M)$ is the obstruction to a degree 1 map $f : M^m \rightarrow S^m$ being *s-transverse* to some point $* \in S^m$. Bryant, Ferry, Mio and Weinberger [1] constructed exotic homology manifolds M^m in dimensions $m \geq 6$ which are not resolvable, and initiated the surgery classification theory for high-dimensional homology manifolds up to *s-cobordism*.

In Chapter 1 we shall modify the construction of [1] to obtain a connected homology manifold $M = N_I$ with prescribed resolution obstruction $I \in L_0(\mathbb{Z})$, starting with any connected m -dimensional topological manifold N ($m \geq 6$). This homology manifold is not homotopy equivalent to N , but it is in a prescribed homology manifold normal bordism class of N .

The first named author used the theory of [1] to prove that m -dimensional homology manifolds have codimension q s -transversality and splitting in the following cases.

Theorem (Homology manifold π - π s -transversality, Johnston [6])

Let $f : M \rightarrow P$ be a map from an m -dimensional homology manifold M to a space P with a codimension q bundle subspace (Q, R, ξ) , with $m - q \geq 6$.

- (i) If $q = 1$, ξ is trivial, and $R = R_1 \sqcup R_2$ is disconnected with $\pi_1(Q) \cong \pi_1(R_1)$, then f is s -transverse to $Q \subset P$.
- (ii) If $q \geq 3$ then f is s -transverse to $Q \subset P$.

Definition (i) A codimension q Poincaré bundle subspace (Q, R, ξ) of an m -dimensional Poincaré space P is a codimension q bundle subspace such that Q is an $(m - q)$ -dimensional Poincaré space and $(R, S(\xi))$ is an m -dimensional Poincaré pair, where $S(\xi)$ is the total space of the S^{q-1} -bundle of ξ over P .

(ii) Let P, Q, R, ξ be as in (i). A simple homotopy equivalence $f : M \rightarrow P$ from an m -dimensional homology manifold M splits at $Q \subset P$ if f is s -cobordant to a simple homotopy equivalence (also denoted by f) which is transverse to $Q \subset P$ and such that the restrictions $f| : f^{-1}(Q) \rightarrow Q$, $f| : f^{-1}(R) \rightarrow R$ are also simple homotopy equivalences.

Theorem (Homology manifold splitting, Johnston [6])

Let $f : M \rightarrow P$ be a simple homotopy equivalence from an m -dimensional homology manifold M to an m -dimensional Poincaré space P with a codimension q Poincaré bundle subspace (Q, R, ξ) , with $m - q \geq 6$.

- (i) (Codimension 1 π - π splitting) If $q = 1$, ξ is trivial, and $R = R_1 \sqcup R_2$ is disconnected with $\pi_1(Q) \cong \pi_1(R_1)$, then f splits at $Q \subset P$.
- (ii) (Browder splitting) If $q \geq 3$ then f splits at $Q \subset P$ if and only if the restriction $g = f| : f^{-1}(Q) \rightarrow Q$ has surgery obstruction $\sigma_*(g) = 0 \in L_{m-q}(\mathbb{Z}[\pi_1(Q)])$.

In Chapters 2,3,4 we shall use the theory of [1] to obtain even stronger results on homology manifold transversality and codimension q splitting. The results of this paper require a slightly higher dimension hypothesis $m - q \geq 7$. The extra dimension is needed to apply codimension 1 π - π splitting, (i) above, to a homology manifold of dimension $m - q$. Thus we require $m - q - 1 \geq 6$ or $m - q \geq 7$.

Wall [18] (Chapter 11) obtained a codimension q splitting obstruction $s_Q(f) \in LS_{m-q}(\Phi)$ for a simple homotopy equivalence $f : M \rightarrow P$ from an m -dimensional topological manifold M to an m -dimensional Poincaré space P with a codimension $q \geq 1$ Poincaré bundle subspace (Q, R, ξ) , such that $s_Q(f) = 0$ if (and for $m - q \geq 5$ only if) f splits at $Q \subset P$. Our first main result obtains the analogous obstruction for the codimension q splitting of homology manifolds. (The full statement will be given in Theorem 3.2.)

Theorem 0.1. A simple homotopy equivalence $f : M \rightarrow P = E(\xi) \cup_{S(\xi)} R$ from an m -dimensional homology manifold M to an m -dimensional Poincaré space P with

a codimension q Poincaré bundle subspace (Q, R, ξ) has a codimension q splitting obstruction

$$s_Q(f) \in LS_{m-q}(\Phi)$$

such that $s_Q(f) = 0$ if (and for $m - q \geq 7$ only if) f splits at $Q \subset P$.

Our second main result establishes homology manifold s -transversality in the case $m - q \geq 7$, generalizing the homology manifold π - π s -transversality theorem of [6]. This result appears as Theorem 4.1 below.

Theorem 0.2. *Let $f : M \rightarrow P = E(\xi) \cup_{S(\xi)} R$ be a map from an m -dimensional homology manifold M to a space P with a codimension q bundle subspace (Q, R, ξ) . If $m - q \geq 7$ then f is s -transverse to $Q \subset P$.*

In Chapters 5,6 we consider s -transversality for a map $f : M \rightarrow P$ from a homology manifold M to the polyhedron $P = |K|$ of a (finite) simplicial complex K . Instead of seeking s -transversality to just one codimension q bundle subspace $Q \subset P$ we consider s -transversality to all the dual cells $|D(\sigma, K)| \subset P$ ($\sigma \in K$) at once, following the work of Cohen [3] on PL manifold transversality.

The *dual cells* of a simplicial complex K are the subcomplexes of K'

$$D(\sigma, K) = \{\hat{\sigma}_0 \hat{\sigma}_1 \dots \hat{\sigma}_p \in K' \mid \sigma \leq \sigma_0 < \sigma_1 < \dots < \sigma_p\} \quad (\sigma \in K) .$$

The boundary of a dual cell is the subcomplex

$$\begin{aligned} \partial D(\sigma, K) &= \bigcup_{\tau > \sigma} D(\tau, K) \\ &= \{\hat{\sigma}_0 \hat{\sigma}_1 \dots \hat{\sigma}_p \in K' \mid \sigma < \sigma_0 < \sigma_1 < \dots < \sigma_p\} \subset D(\sigma, K) . \end{aligned}$$

Definition (Dual transversality)

(i) A map $f : M \rightarrow |K|$ from an m -dimensional manifold M (in some manifold category) is *dual transverse* if the inverse images of the dual cells are codimension $|\sigma|$ submanifolds

$$M(\sigma)^{m-|\sigma|} = f^{-1}(D(\sigma, K)) \subseteq M^m$$

with boundary

$$\partial M(\sigma) = f^{-1}(\partial D(\sigma, K)) = \bigcup_{\tau > \sigma} M(\tau) .$$

(ii) An m -dimensional manifold M has *dual s -transversality* if every map $f : M \rightarrow |K|$ is s -cobordant to a dual transverse map.

Dual transversality implies submanifold transversality : if

$$f : M^m \rightarrow P = |K| = E(\xi) \cup_{S(\xi)} R$$

is dual transverse then f is transverse to every polyhedral codimension q bundle subspace $Q \subset P$. PL manifolds and PL homology manifolds M have dual transversality, with every simplicial map $f : M \rightarrow K'$ dual transverse – in this case each inverse image $f^{-1}(D(\sigma, K)) \subset M$ ($\sigma \in K$) is automatically a PL submanifold of codimension $|\sigma|$ (Cohen [3]), so there is no need to use s -cobordisms. Topological manifolds M have dual transversality by the work of Kirby-Siebenmann [8] and Quinn [13], with every map $f : M \rightarrow |K|$ homotopic to a dual transverse map.

The s -transversality result of Theorem 0.2 can be applied inductively to obtain dual s -transversality for a map $f : M^m \rightarrow |K|$ in the case when the inverse images $f^{-1}(D(\sigma, K))$ ($\sigma \in K$) are required to be homology manifolds of dimensions $m - |\sigma| \geq 7$.

Corollary 0.3. *If $f : M \rightarrow |K|$ is a map from an m -dimensional homology manifold M to the polyhedron of a k -dimensional simplicial complex K with $m - k \geq 7$ then f is dual s -transverse.*

On the other hand, if $m - k < 7$, dual transversality may be obstructed. Consider for example the case of $f : M \rightarrow |K|$ for $m = k$, with M connected. In this case the resolution obstruction is easily shown to be an obstruction to dual transversality. If $f : M \rightarrow |K|$ is dual transverse, then for some m -simplex $\sigma^m \in K$ and a sequence of faces $\sigma^0 < \sigma^1 < \dots < \sigma^m$ the inverse images $M(\sigma^j)^{m-j} = f^{-1}(D(\sigma^j, K))$ are non-empty codimension j homology submanifolds of M with

$$M(\sigma^m)^0 \subset \partial M(\sigma^{m-1})^1 \subset M(\sigma^{m-1})^1 \subset \dots \subset M(\sigma^0)^m \subset M.$$

Quinn ([12], 1.1) proved that the resolution obstruction $i(X)$ is such that :

- (i) $i(U) = i(X)$ for any open subset $U \subset X$ of a homology manifold X ,
- (ii) $i(X) = i(\partial X)$ for any connected homology manifold X with non-empty boundary ∂X .

It follows that

$$i(M(\sigma^m)^0) = i(M(\sigma^{m-1})^1) = \dots = i(M(\sigma^0)^m) = i(M).$$

Now $M(\sigma^m)$ is a 0-dimensional homology manifold, which is a (finite) union of points, so that $i(M) = i(M(\sigma^m)) = 0$ and M is resolvable. In Chapter 6 we use the algebraic topology of homology manifold bordism to prove a strong generalization of this result. Although the resolution obstruction continues to play a key role, the general form of the dual transversality obstruction is more complicated algebraically.

For any space X let $\Omega_m^H(X)$ be the bordism group of maps $M \rightarrow X$ from m -dimensional homology manifolds. An m -dimensional topological manifold is an m -dimensional homology manifold, so there are evident forgetful maps

$$\Omega_m^{TOP}(X) \rightarrow \Omega_m^H(X).$$

For any simplicial complex K , let $\Omega_m^{H,\natural}(K)$ be the bordism group of dual transverse maps $M \rightarrow |K|$ from m -dimensional homology manifolds. Forgetting dual transversality gives maps

$$A^H : \Omega_*^{H,\natural}(K) \rightarrow \Omega_*^H(K).$$

The extent to which dual transversality holds for homology manifolds up to bordism is measured by the extent to which the maps A^H are isomorphisms.

Our third main result relates the obstruction to homology manifold dual s -transversality to the resolution obstruction, and identifies the fibre of A^H with a generalized homology theory. The full statement will be given in Theorem 6.6, including the following result :

Theorem 0.4. *For $m \geq 6$ the K -transverse homology manifold bordism groups $\Omega_m^{H,\natural}(K)$ are related to the homology manifold bordism groups $\Omega_m^H(K)$ by an exact sequence*

$$\dots \rightarrow \Omega_m^{H,\natural}(K) \rightarrow \Omega_m^H(K) \rightarrow H_m(K; \mathcal{L}_\bullet) \rightarrow \Omega_{m-1}^{H,\natural}(K) \rightarrow \dots$$

with \mathcal{L}_\bullet a spectrum such that $\pi_0(\mathcal{L}_\bullet) = \mathbb{Z}[L_0(\mathbb{Z}) \setminus \{0\}]$ and $\pi_m(\mathcal{L}_\bullet) = 0$ for $m \geq 6$.

Ferry and Pedersen [4] showed that the Spivak normal fibration ν_M of an m -dimensional homology manifold M admits a canonical TOP reduction $\tilde{\nu}_M$, so that there is a canonical bordism class of normal maps $M_{TOP} \rightarrow M$ from topological manifolds. The surgery obstruction $\sigma_*(M_{TOP} \rightarrow M) \in L_m(\mathbb{Z}[\pi_1(M)])$ is determined by the resolution obstruction $i(M) \in H_m(M; L_0(\mathbb{Z}))$.

For any abelian group A let $A[L_0(\mathbb{Z})]$ be the abelian group of finite linear combinations

$$\sum_{i \in L_0(\mathbb{Z})} a_i [i] \quad (a_i \in A) ,$$

that is the direct sum of $L_0(\mathbb{Z})$ copies of A

$$A[L_0(\mathbb{Z})] = \mathbb{Z}[L_0(\mathbb{Z})] \otimes_{\mathbb{Z}} A = \bigoplus_{L_0(\mathbb{Z})} A .$$

Theorem (The additive structure of homology manifold bordism, Johnston [6])
For any simplicial complex K the map of bordism groups

$$\Omega_m^H(K) \rightarrow \Omega_m^{TOP}(K)[L_0(\mathbb{Z})] ; (M, f) \mapsto (M_{TOP}, f_{TOP})[i(M)]$$

is an isomorphism for $m \geq 6$, with

$$f_{TOP} : M_{TOP} \rightarrow M \xrightarrow{f} |K| .$$

In Chapter 7 we shall analyze the multiplicative structure on $\Omega_m^{TOP}(K)[L_0(\mathbb{Z})]$ which corresponds to the cartesian product of homology manifolds under the isomorphism $\Omega_m^H(K) \cong \Omega_m^{TOP}(K)[L_0(\mathbb{Z})]$.

We should like to thank the referee and Bruce Hughes for helpful comments on the manuscript.

1. HOMOLOGY MANIFOLD SURGERY AND BORDISM

We review and extend the surgery theory of ANR homology manifolds.

An (oriented) *simple m -dimensional Poincaré space* X is a compact ANR with a fundamental class $[X] \in H_m(X)$ such that the chain map

$$[X] \cap - : C(\tilde{X})^{m-*} = \text{Hom}_{\mathbb{Z}[\pi_1(X)]}(C(\tilde{X}), \mathbb{Z}[\pi_1(X)])^{m-*} \rightarrow C(\tilde{X})$$

is a simple $\mathbb{Z}[\pi_1(X)]$ -module chain equivalence inducing isomorphisms

$$[X] \cap - : H^{m-*}(\tilde{X}) \cong H_*(\tilde{X}) ,$$

with \tilde{X} the universal cover of X and $H^*(\tilde{X}) \equiv H_{-*}(C(\tilde{X})^{-*})$. (A compact ANR has a preferred simple homotopy type by the work of Chapman [2]). In particular, an m -dimensional homology manifold is an m -dimensional Poincaré space.

The *manifold structure set* $\mathcal{S}(X)$ of a simple m -dimensional Poincaré space X is the set of equivalence classes of pairs (M, h) with M an m -dimensional topological manifold and $h : M \rightarrow X$ a simple homotopy equivalence, with $(M_1, h_1) \simeq (M_2, h_2)$ if there exists an s -cobordism $(W; M_1, M_2)$ with a simple homotopy equivalence of the type

$$(g; h_1, h_2) : (W; M_1, M_2) \rightarrow X \times ([0, 1]; \{0\}, \{1\}) .$$

The *normal invariant set* $\mathcal{T}(X)$ is the bordism set of degree 1 normal maps $(f, b) : M \rightarrow X$ from topological manifolds, with $b : \nu_M \rightarrow \tilde{\nu}_X$ a bundle map from the

normal bundle of M to a TOP reduction of the Spivak normal fibration of X . For $m \geq 5$ the Browder-Novikov-Sullivan-Wall surgery theory for topological manifolds gives the surgery exact sequence

$$\cdots \rightarrow L_{m+1}(\mathbb{Z}[\pi_1(X)]) \xrightarrow{\partial} \mathcal{S}(X) \xrightarrow{\eta} \mathcal{T}(X) \xrightarrow{\theta} L_m(\mathbb{Z}[\pi_1(X)])$$

(Wall [18], Chapter 10). In general, it is possible for $\mathcal{T}(X)$ and $\mathcal{S}(X)$ to be empty: the theory involves a primary topological K -theory obstruction for deciding if $\mathcal{T}(X)$ is non-empty and a secondary algebraic L -theory obstruction for deciding if $\mathcal{S}(X)$ is non-empty. More precisely, $\mathcal{T}(X)$ is non-empty if and only if the Spivak normal fibration $\nu_X : X \rightarrow BG(k)$ (k large) admits a TOP reduction $\tilde{\nu}_X : X \rightarrow \widehat{BTOP}(k)$, corresponding by the Browder-Novikov transversality construction on a degree 1 map $\rho : S^{m+k} \rightarrow T(\tilde{\nu}_X)$ to a normal map

$$(f, b) = \rho| : M = \rho^{-1}(X) \rightarrow X$$

from a topological manifold. A choice of $\tilde{\nu}_X$ determines a bijection

$$\mathcal{T}(X) \cong [X, G/TOP] .$$

The algebraic surgery exact sequence of Ranicki [16]

$$\cdots \rightarrow L_{m+1}(\mathbb{Z}[\pi_1(X)]) \rightarrow \mathcal{S}_{m+1}(X) \rightarrow H_m(X; \mathbb{L}_\bullet) \xrightarrow{A} L_m(\mathbb{Z}[\pi_1(X)]) \rightarrow \cdots$$

is defined for any space X , with A the assembly map on the generalized homology group of the 1-connective quadratic L -theory spectrum $\mathbb{L}_\bullet = \mathbb{L}_\bullet \langle 1 \rangle (\mathbb{Z})$ of \mathbb{Z} , with 0th space

$$\mathbb{L}_0 \simeq G/TOP$$

and homotopy groups the simply-connected surgery obstruction groups

$$\pi_m(\mathbb{L}_\bullet) = L_m(\mathbb{Z}) = \begin{cases} \mathbb{Z} & \text{if } m \equiv 0 \pmod{4} \\ 0 & \text{if } m \equiv 1 \pmod{4} \\ \mathbb{Z}_2 & \text{if } m \equiv 2 \pmod{4} \\ 0 & \text{if } m \equiv 3 \pmod{4} . \end{cases}$$

The total surgery obstruction $s(X) \in \mathcal{S}_m(X)$ of a simple m -dimensional geometric Poincaré complex is such that $s(X) = 0$ if (and for $m \geq 5$ only if) X is simple homotopy equivalent to an m -dimensional topological manifold. The surgery exact sequence of an m -dimensional topological manifold M is isomorphic to the corresponding portion of the algebraic surgery exact sequence, with

$$\mathcal{S}(M) = \mathcal{S}_{m+1}(M) , \mathcal{T}(M) = [M, G/TOP] = H_m(M; \mathbb{L}_\bullet) .$$

The surgery theory of topological manifolds was extended to homology manifolds in Quinn [11],[12] and Bryant, Ferry, Mio and Weinberger [1], using the 4-periodic algebraic surgery exact sequence of Ranicki [16] (Chapter 25)

$$\cdots \rightarrow L_{m+1}(\mathbb{Z}[\pi_1(X)]) \rightarrow \overline{\mathcal{S}}_{m+1}(X) \rightarrow H_m(X; \overline{\mathbb{L}}_\bullet) \xrightarrow{\overline{A}} L_m(\mathbb{Z}[\pi_1(X)]) \rightarrow \cdots$$

This sequence is defined for any space X , with \overline{A} the assembly map on the generalized homology group of the 0-connective quadratic L -theory spectrum $\overline{\mathbb{L}}_\bullet = \overline{\mathbb{L}}_\bullet \langle 0 \rangle (\mathbb{Z})$ of \mathbb{Z} , with 0th space

$$\overline{\mathbb{L}}_0 \simeq G/TOP \times L_0(\mathbb{Z}) .$$

The 4-periodic total surgery obstruction $\overline{s}(X) \in \overline{\mathcal{S}}_m(X)$ of a simple m -dimensional geometric Poincaré complex X is such that $\overline{s}(X) = 0$ if (and for $m \geq 6$ only if)

X is simple homotopy equivalent to an m -dimensional homology manifold, by [1]. The *homology manifold structure set* $\mathcal{S}^H(X)$ of a simple m -dimensional Poincaré space X is defined in the same way as $\mathcal{S}(X)$ but using homology manifolds. The surgery exact sequence of an m -dimensional homology manifold M is isomorphic to the corresponding portion of the 4-periodic algebraic surgery exact sequence, with

$$\mathcal{S}^H(M) = \overline{\mathcal{S}}_{m+1}(M) .$$

The essential difference between surgery on homology manifolds and topological manifolds is that there is no Browder-Novikov transversality allowing the construction of normal maps from homology manifolds. Thus, the surgery exact sequence of [1] does not follow Wall [18] in relating homology manifold structures and normal invariants. Rather, the homology manifold surgery exact sequence of [1] follows the stratified surgery exact sequence of Weinberger [19] in that it relates two purely algebraically defined groups with the geometrically defined structure set. Despite the fact that [1] does not define homology manifold normal invariants, one can define homology manifold normal invariants, $\mathcal{T}(X)$ similar to normal invariants of topological manifolds.

The *homology normal invariant set* $\mathcal{T}^H(X)$ is the bordism set of degree 1 normal maps $(f, b) : M \rightarrow X$ from connected homology manifolds, with $b : \tilde{\nu}_M \rightarrow \tilde{\nu}_X$ a map from the canonical TOP reduction ([4]) of the Spivak normal fibration of M to a TOP reduction of the Spivak normal fibration of X . It is still the case that $\mathcal{T}^H(X)$ is non-empty if and only if ν_X is TOP reducible, but now it is necessary to also keep track of the resolution obstruction, and the homology manifolds have to be constructed using controlled topology. The following theorem allows us to use the geometric interpretation $\mathcal{T}^H(X)$ in the homology manifold surgery exact sequence of [1].

Theorem 1.1. (Johnston [6])

Let $m \geq 6$. For a connected simple m -dimensional Poincaré space X the function

$$\mathcal{T}^H(X) \rightarrow \mathcal{T}(X) \times L_0(\mathbb{Z}) ;$$

$$((f, b) : M \rightarrow X) \mapsto ((f_{TOP}, b_{TOP}) : M_{TOP} \rightarrow M \xrightarrow{(f, b)} X, i(M))$$

is a natural bijection, with $M_{TOP} \rightarrow M$ the topological degree 1 normal map determined by the canonical TOP reduction. A choice of $\tilde{\nu}_X$ determines a bijection

$$\mathcal{T}^H(X) \cong [X, G/TOP \times L_0(\mathbb{Z})] .$$

Actually [6] (5.2) is for $m \geq 7$, but we can improve to $m \geq 6$ by a slight variation of the proof as described below.

Given the above theorem, the homology manifold surgery exact sequence of [1]

$$\cdots \rightarrow L_{m+1}(\mathbb{Z}[\pi_1(X)]) \xrightarrow{\partial} \mathcal{S}^H(X) \xrightarrow{\eta} [X, G/TOP \times L_0(\mathbb{Z})] \xrightarrow{\theta} L_m(\mathbb{Z}[\pi_1(X)])$$

becomes:

Theorem 1.2. (Bryant, Mio, Ferry and Weinberger [1])

The homology manifold structure set $\mathcal{S}^H(X)$ fits into the exact sequence

$$\cdots \rightarrow L_{m+1}(\mathbb{Z}[\pi_1(X)]) \xrightarrow{\partial} \mathcal{S}^H(X) \xrightarrow{\eta} \mathcal{T}^H(X) \xrightarrow{\theta} L_m(\mathbb{Z}[\pi_1(X)]) .$$

In particular, $\mathcal{S}^H(X)$ is non-empty if and only if there exists a degree 1 normal map $(f, b) : M \rightarrow X$ from a homology manifold M with surgery obstruction $0 \in L_m(\mathbb{Z}[\pi_1(X)])$.

If M is an m -dimensional homology manifold the canonical bordism class of topological normal maps $M_{TOP} \rightarrow M$ determined by the canonical TOP reduction $\tilde{\nu}_M$ ([4]) of the Spivak normal fibration has surgery obstruction

$$\sigma_*(M_{TOP} \rightarrow M) = \overline{A}(-i(M)) \in L_m(\mathbb{Z}[\pi_1(M)])$$

the image (up to sign) of the resolution obstruction $i(M) \in H_m(M; L_0(\mathbb{Z}))$ under the composite

$$H_m(M; L_0(\mathbb{Z})) \subseteq H_m(M; \overline{\mathbb{L}}_\bullet) \xrightarrow{\overline{A}} L_m(\mathbb{Z}[\pi_1(M)]) .$$

Remark 1.3. The algebraic surgery exact sequence has a geometric interpretation: the map $\eta : \mathcal{S}^H(X) \rightarrow \mathcal{T}^H(X)$ is given by the forgetful map and the map $\partial : L_{m+1}(\mathbb{Z}[\pi_1(X)]) \rightarrow \mathcal{S}^H(X)$ is given by “Wall Realization”, i.e. the homology manifold analogue of the constructions of Chapters 5 and 6 of [18] realizing the elements of the L -groups as the surgery obstructions of normal maps obtained by non-simply connected plumbing.

To see that η is the forgetful map take $f : Y \rightarrow X$ and compare $\eta(f)$ with $(f : Y \rightarrow X) \in \mathcal{T}^H(X)$. By 1.1 above we may consider instead their images in $\mathcal{T}(X) \times L_0(\mathbb{Z})$. By definition of the canonical TOP -reduction of the Spivak normal fibration ν_Y (Ferry and Pedersen [4]), $\eta(f)$ is given by $f \circ f_{TOP} : Y_{TOP} \rightarrow Y \rightarrow X$, i.e. it agrees with the image of $f : Y \rightarrow X$.

“Wall Realization” does not (yet) have an obvious geometric interpretation for homology manifolds. There are no homology manifold “handles” with nice attaching maps. Nevertheless, one can obtain the following theorem.

Theorem 1.4. (Johnston [6])

Let $m \geq 6$. For an m -dimensional Poincaré space P with a specified homotopy equivalence $h : X \rightarrow P$, with X a homology manifold, and for any element $\sigma \in L_{m+1}(\mathbb{Z}[\pi_1(P)])$, the image $\partial(\sigma) \in \mathcal{S}^H(P)$ under the map $\partial : L_{m+1}(\mathbb{Z}[\pi_1(P)]) \rightarrow \mathcal{S}^H(P)$ in the surgery exact sequence of [1] has a representative $g : Y \rightarrow P$ such that there exists a homology manifold bordism $r : W \rightarrow P \times [0, 1]$ with $r|_{\partial W} = g \amalg h$.

This theorem follows from 1.1 and the surgery exact sequence of [1] for $\mathcal{S}^H(P \times [0, 1], P \times \{0, 1\})$ relative to the given structures $(g, h) \in \mathcal{S}^H(P \times \{0, 1\})$.

Theorem 1.1 is a corollary of the construction below. This construction is almost identical to that in [6], except that we have removed the use of codimension 1 π - π splitting to gain an extra dimension $m \geq 6$. Nonetheless, we describe the proof in detail here, because we shall need to refer to the details later as we prove a transverse variation. A transverse variation of Theorem 1.1 follows from a transverse variation of 1.5.

Proposition 1.5. *Let $m \geq 6$. Given a connected m -dimensional topological manifold N and an element $I \in L_0(\mathbb{Z})$ there exists a degree 1 normal map $(f_I, b_I) : N_I \rightarrow N$ from a connected homology manifold N_I such that:*

(i) *The resolution obstruction of N_I in $L_0(\mathbb{Z})$ is*

$$i(N_I) = I \in L_0(\mathbb{Z}) .$$

(ii) *The composite*

$$(N_I)_{TOP} \xrightarrow{(f_{TOP}, b_{TOP})} N_I \xrightarrow{(f_I, b_I)} N$$

is normally bordant to the identity map.

- (iii) If M is a connected m -dimensional homology manifold with resolution obstruction $i(M) = I \in L_0(\mathbb{Z})$, then the composite

$$(M_{TOP})_I \xrightarrow{(f_I, b_I)} M_{TOP} \xrightarrow{(f_{TOP}, b_{TOP})} M$$

is normally bordant to the identity map $M \rightarrow M$.

Proof of Theorem 1.1: Denote the given function by $\Phi : \mathcal{T}^H(X) \rightarrow \mathcal{T}(X) \times L_0(\mathbb{Z})$. Define a function

$$\begin{aligned} \Psi : \mathcal{T}(X) \times L_0(\mathbb{Z}) &\rightarrow \mathcal{T}^H(X) ; \\ ((f, b) : N \rightarrow X, I) &\mapsto ((f_I, b_I) : N_I \rightarrow N \xrightarrow{(f, b)} X) \end{aligned}$$

where $(f_I, b_I) : N_I \rightarrow N$ is the result of applying proposition 1.5 to the pair N, I .

The composition $\Phi \circ \Psi$ is the identity by 1.5 (ii), and the composition $\Psi \circ \Phi$ is the identity by 1.5 (iii). \square

Proof of Proposition 1.5:

The construction of $(f_I, b_I) : N_I \rightarrow N$.

The construction of N_I is a variation on a construction found in [1] (Section 7) which is in turn a variation on the main construction of that paper. In [1] (Section 7) the construction is performed on a torus, resulting in a homology manifold not homotopy equivalent to any manifold. We perform the construction on an arbitrary topological manifold with (i), (ii) and (iii) above as the result.

Let σ denote the element of $H_m(N; \overline{\mathbb{L}}_\bullet)$ which corresponds to the canonical TOP reduction of the Spivak normal fibration of N , with the desired index I . Given a sequence $\eta_k > 0$ so that $\lim_{k \rightarrow \infty} \eta_k = 0$.

Step I: Construct a Poincaré space X_0 with a map $p_0 : X_0 \rightarrow N$ so that

- (i) X_0 is η_0 -Poincaré over N .
- (ii) p_0 is UV^1 .
- (iii) p_0 has controlled surgery obstruction $\sigma \in H_m(N; \overline{\mathbb{L}}_\bullet)$.

Slice N open along the boundary of a manifold two skeleton, D . So $N = B \cup_D C$. We first apply Lemma 4.4 from [1]. This will allow us to perform a small homotopy on $\text{id}_N : N \rightarrow N$ to get a new map $q_0 : N \rightarrow N$ which restricts to a UV^1 map on B, C and D . Because $q_0|_D$ is a UV^1 map, the controlled surgery obstruction group of $D \times [0, 1] \xrightarrow{q_0 \text{proj.}} N$ is

$$L^c \left(\begin{array}{c} D \times [0, 1] \\ \downarrow \\ N \end{array} \right) \cong H_m(N; \overline{\mathbb{L}}_\bullet) \cong H_m(N; \mathbb{L}_\bullet) \oplus H_m(N; L_0(\mathbb{Z})) .$$

Now by Wall realization we construct a normal invariant $\sigma : K \rightarrow D \times [0, 1]$ with controlled surgery obstruction σ , which is given by a controlled homotopy equivalence $k : D' \rightarrow D$ on one end and by the identity on the other.

Gluing B and C back onto K by the identity and by k respectively results in X_0 a Poincaré complex. We define a map $p_0 : X_0 \rightarrow N$ by $p_0|_{B \cup C} = \text{id}$ and $p_0|_K = \sigma$. By applying [1] (4.4) we may assume p_0 is UV^1 . By taking sufficiently fine control we may assume that X_0 is an η_1 -Poincaré space over N .

The Poincaré space X_0 has 4-periodic total surgery obstruction

$$\overline{s}(X_0) = 0 \in \overline{\mathcal{S}}_m(X_0) ,$$

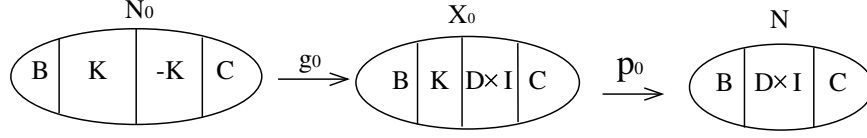


FIGURE 1. The construction of the spaces N_0 and X_0 and the maps g_0 and p_0 .

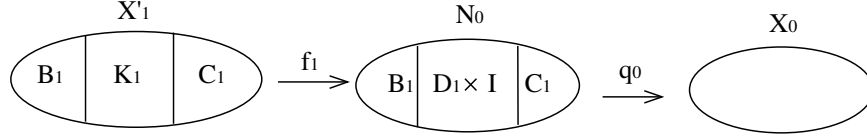


FIGURE 2. By construction one can surger the composition of maps $X'_1 \xrightarrow{f_1} N_0 \xrightarrow{q_0} X_0$ to a homotopy equivalence $p_1 : X_1 \rightarrow X_0$.

so that X_0 is homotopy equivalent to the desired homology manifold N_I as given by [1] (6.1). In this variation of the main construction of [1] the next steps use the Poincaré space X_0 and the degree 1 normal map $g_0 : N_0 \rightarrow X_0$ representing the controlled surgery obstruction $-\sigma$ as described below.

Below is a brief summary of the rest of the construction in this case. It is a limiting process in which the cut and paste type construction from Step I is performed on finer and finer manifold two skeleta of manifolds N_k .

Step II: Construct a Poincaré space X_1 and a map $p_1 : X_1 \rightarrow X_0$ so that

- (i) The map p_1 is UV^1 .
- (ii) X_1 is an η_1 -Poincaré space over X_0 .
- (iii) The map $p_1 : X_1 \rightarrow X_0$ is an ϵ_1 -homotopy equivalence over N .
- (iv) For W_0 a regular neighborhood of X_0 , there exists an embedding $X_1 \rightarrow W_0$ and a retraction $r_1 : W_0 \rightarrow X_1$ so that $d(r_0, r_1) < \epsilon_1$.

Let N_0 be given by $B \cup_D K \cup_{D'} -K \cup_D C$. Define a map

$$g_0 : N_0 \rightarrow X_0 = B \cup_D K \cup_D D \times [0, 1] \cup_D C$$

by the identity on B , K and C and by $-\sigma$ on $-K$. By [1] (4.4) we may assume that g_0 is UV^1 . Let $N_0 = B_1 \cup_{D_1} C_1$ be a decomposition of N_0 by a finer manifold two skeleton than that of N . Let q_0 denote the map homotopic to g_0 which restricts to a map UV^1 on B_1 , C_1 and D_1 .

Since the map p_0 is UV^1 it induces an isomorphism

$$(p_0)_* : H_m(X_0; \overline{\mathbb{L}}_\bullet) \cong H_m(N; \overline{\mathbb{L}}_\bullet).$$

Let $\sigma_1 : K_1 \rightarrow D_1 \times [0, 1]$ denote a Wall realization of the element of $H_m(X_0; \overline{\mathbb{L}}_\bullet)$ which corresponds to σ . Define $X'_1 = B_1 \cup K_1 \cup C_1$ with a map $f_1 : X'_1 \rightarrow N_0$ defined as for p_0 consider the composition of maps $X'_1 \rightarrow N_0 \rightarrow X_0$ and notice that it has vanishing surgery obstruction and can therefore be surgered to a small homotopy equivalence over N . (This type of surgery on a Poincaré space is in the tradition of Lowell Jones [7].) Denote the result of this surgery by $p_1 : X_1 \rightarrow X_0$. We may assume that p_1 is UV^1 .

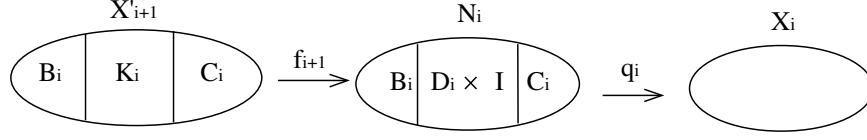


FIGURE 3. By construction one can surger the composition of maps $X'_{i+1} \xrightarrow{f_{i+1}} N_i \xrightarrow{q_i} X_i$ to a homotopy equivalence $p_{i+1} : X_{i+1} \rightarrow X_i$.

By choosing a sufficiently well-controlled surgery obstruction, we may assume that X_1 is η_1 -Poincaré over X_0 . By choosing η_0 sufficiently small we may verify conditions (iii) and (iv).

Step III: Construct a Poincaré space X_{i+1} and a map $p_{i+1} : X_{i+1} \rightarrow X_i$ so that

- (i) p_{i+1} is UV_1 ,
- (ii) X_{i+1} is η_i -Poincaré over X_i ,
- (iii) p_{i+1} is an ϵ_i equivalence over X_{i-1} ,
- (iv) there is an embedding $X_{i+1} \rightarrow W_i \subset W_0$ and a retraction $r_i : W_0 \rightarrow X_{i+1}$ so that $d(r_i, r_{i+1}) < \epsilon_i$.

Let $g_i : N_i \rightarrow X_i$ be a degree 1 normal map with surgery obstruction $-\sigma \in H_m(X_{i-1}; \overline{\mathbb{L}}_\bullet) \cong H_m(N; \overline{\mathbb{L}}_\bullet)$. By [1] (4.4) we may assume that f_i is UV^1 . Let $N_i = B_i \cup_{D_i} C_i$ be a decomposition of N_i by a finer manifold two skeleton than that of N_{i-1} . Let q_i denote the map homotopic to g_i which restricts to a map UV^1 on B_i , C_i and D_i .

Since the map p_i is UV^1 it induces an isomorphism

$$H_m(X_i; \overline{\mathbb{L}}_\bullet) \cong H_m(X_{i-1}; \overline{\mathbb{L}}_\bullet) \cong H_m(N; \overline{\mathbb{L}}_\bullet).$$

Let $\sigma_i : N_i \rightarrow D_i \times [0, 1]$ denote a Wall realization of the element of $H_m(X_i; \overline{\mathbb{L}}_\bullet)$ which corresponds to σ . Define $X'_{i+1} = B_i \cup K_i \cup C_i$ with a map $f_{i+1} : X'_{i+1} \rightarrow N_i$ defined as for p_0 consider the composition of maps $X'_{i+1} \rightarrow N_i \rightarrow X_i$ and notice that it has vanishing surgery obstruction and can therefore be surgered to a small homotopy equivalence over X_{i-1} . Denote the result of this surgery by $p_{i+1} : X_{i+1} \rightarrow X_i$. We may assume that p_{i+1} is UV^1 .

By choosing a sufficiently well-controlled surgery obstruction, we may assume that X_{i+1} is η_{i+1} -Poincaré over X_i . By choosing η_{i-1} sufficiently small we may verify conditions (iii) and (iv).

Step IV: Let $N_I = \cap_{i=1}^\infty W_i$. This is the desired homology manifold and let the map $N_I \rightarrow N$ be defined by $N_I \xrightarrow{r_k|_{N_I}} X_0 \xrightarrow{p_0} N$.

N_I is an ANR , because the limit of the retractions r_i defines a retraction $r : W_0 \rightarrow N_I$. To see that N_I is a homology manifold, we first use condition (iv) to improve the retractions r_i . Then this together with the fact that each X_i is an η_i -Poincaré space over X_{i-1} can be used to show that there is a retraction $\rho : W_0 \rightarrow N_I$ so that $\rho| : \partial W_0 \rightarrow N_I$ is an approximate fibration, which shows that N_I is a homology manifold.

This concludes the construction of $(f_I, b_I) : N_I \rightarrow N$. It remains to show that the construction has produced the desired result.

Proof of (i): Consider the controlled surgery obstruction of $N_k \rightarrow X_k \rightarrow N_I$ controlled over N_I by the identity map $N_I \rightarrow N_I$. Since the map $\rho : X_k \rightarrow N_I$ can be assumed to be UV^1 this is the same as the controlled surgery obstruction of $g_k : N_k \rightarrow X_k$ where X_k has control map $\rho : X_k \rightarrow N_I$. By the argument given in [1] the control maps $\rho : X_k \rightarrow N_I$ and

$$X_k \xrightarrow{p_k} X_{k-1} \xrightarrow{\rho} N_I$$

are homotopic by a small homotopy. Thus the controlled surgery obstruction of g_k with one control map ρ is the same as that with control map p_k , but by construction this surgery obstruction was $-\sigma$, i.e. the resolution obstruction of N_I is I . \square

Proof of (ii): Let $f_{TOP} : (N_I)_{TOP} \rightarrow N_I$ denote the degree 1 normal map induced by the TOP reduction of N_I given by the map

$$N_I \xrightarrow{f_I} N \xrightarrow{\nu_N} BTOP.$$

By construction this map is normally bordant to $\text{id}_N : N \rightarrow N$. \square

Proof of (iii): The proof is the same as injectivity of Φ in Theorem 5.2 of [6], except that we now restrict our attention to showing that the composition $(f_{TOP})_I \circ f_{TOP} : (M_{TOP})_I \rightarrow M_{TOP} \rightarrow M$ is homology manifold normal bordant to the identity map $\text{id}_M : M \rightarrow M$. Since any map $f_I : N_I \rightarrow N$ is an isomorphism on fundamental groups, we can avoid Lemma 5.4 of [6] and its requirement that $m \geq 7$. The map f_I is an isomorphism on fundamental groups, because it splits as a homotopy equivalence $h : N_I \rightarrow X_0$ and the original map $p_0 : X_0 \rightarrow N$. The fact that p_0 is an isomorphism on fundamental groups follows from the fact that the normal invariant $\sigma : K \rightarrow D \times [0, 1]$ is a Wall realization and therefore an isomorphism on fundamental groups.

A homology manifold normal bordism between $(f_{TOP})_I \circ f_{TOP} : (M_{TOP})_I \rightarrow M_{TOP} \rightarrow M$ and $\text{id}_M : M \rightarrow M$ is constructed as follows. First, a Poincaré bordism $k : W \rightarrow M$ is constructed between the two maps. Then using the fact that we may assume that $(W, (M_{TOP})_I)$ is a (π, π) pair we put a homology manifold structure on W relative to M . See [6] (5.2) for details. \square

For any topological block bundle $\nu : X \rightarrow \widetilde{BTOP}(k)$ define the homology manifold bordism groups $\Omega_m^H(X, \nu)$ of normal maps $(f, b) : M \rightarrow X$ from m -dimensional homology manifolds, with $b : \nu_M \rightarrow \nu$.

Corollary 1.6. *For $m \geq 6$ the m -dimensional homology manifold bordism groups of (X, ν) are such that*

$$\Omega_m^H(X, \nu) \cong \Omega_m^{TOP}(X, \nu)[L_0(\mathbb{Z})].$$

Proof. Use the construction of Proposition 1.5 to define inverse isomorphisms

$$\begin{aligned} \psi : \Omega_m^H(X, \nu) &\rightarrow \Omega_m^{TOP}(X, \nu)[L_0(\mathbb{Z})]; \\ ((f, b) : M \rightarrow X) &\mapsto (M_{TOP} \rightarrow M \xrightarrow{(f, b)} X)[i(M)], \\ \psi^{-1} : \Omega_m^{TOP}(X, \nu)[L_0(\mathbb{Z})] &\rightarrow \Omega_m^H(X, \nu); \\ ((g, c) : N \rightarrow X)[I] &\mapsto (N_I \rightarrow N \xrightarrow{(g, c)} X). \end{aligned}$$

\square

Thus

$$\Omega_m^H(X, \nu) = \Omega_m^{TOP}(X, \nu)[L_0(\mathbb{Z})] = \pi_{m+k}(T(\nu))[L_0(\mathbb{Z})] ,$$

with $T(\nu)$ the Thom space. In particular, for any space K and

$$\nu = \text{proj.} : X = K \times BTOP \rightarrow BTOP$$

we have

$$\Omega_m^H(K) = \Omega_m^{TOP}(K)[L_0(\mathbb{Z})] = H_m(K; \Omega^{TOP}(\{\text{pt.}\}))[L_0(\mathbb{Z})] .$$

If X is an m -dimensional Poincaré space with TOP reducible Spivak normal fibration then for each TOP reduction $\nu : X \rightarrow \widetilde{BTOP}(k)$

$$\Omega_m^H(X, \nu) = \pi_{m+k}(T(\nu))[L_0(\mathbb{Z})] = [X, G][L_0(\mathbb{Z})] .$$

For connected X this is another way to see that

$$\mathcal{T}^H(X) = \mathcal{T}^{TOP}(X) \times L_0(\mathbb{Z}) = [X, G/TOP] \times L_0(\mathbb{Z})$$

as in Theorem 1.2.

2. HOMOLOGY SUBMANIFOLD TRANSVERSALITY UP TO BORDISM

Fix a space P with a codimension q bundle subspace (Q, R, ξ) as in the Introduction.

We now investigate the transversality to $Q \subset P$ of a map $f : M^m \rightarrow P$ from an m -dimensional homology manifold. In the first instance, we show that if $m - q \geq 7$ then f is bordant to a transverse map.

Definition 2.1. The Q -transverse homology manifold bordism group $\Omega_m^{H, Q-\text{tr}}(P)$ is the abelian group of bordism classes of maps $M^m \rightarrow P$ from m -dimensional homology manifolds which are transverse to $Q \subset P$.

There are evident forgetful maps $\Omega_m^{H, Q-\text{tr}}(P) \rightarrow \Omega_m^H(P)$.

Theorem 2.2. (i) *The Q -transverse homology manifold bordism groups fit into an exact sequence*

$$\cdots \rightarrow \Omega_m^H(R) \rightarrow \Omega_m^{H, Q-\text{tr}}(P) \rightarrow \Omega_{m-q}^H(Q) \rightarrow \Omega_{m-1}^H(R) \rightarrow \cdots$$

with

$$\begin{aligned} \Omega_m^H(R) &\rightarrow \Omega_m^{H, Q-\text{tr}}(P) ; (M, f : M \rightarrow R) \mapsto (M, M \xrightarrow{f} R \rightarrow P) , \\ \Omega_m^{H, Q-\text{tr}}(P) &\rightarrow \Omega_{m-q}^H(Q) ; (M, g : M \rightarrow P) \mapsto (g^{-1}(Q), g| : g^{-1}(Q) \rightarrow Q) , \\ \Omega_{m-q}^H(Q) &\rightarrow \Omega_{m-1}^H(R) ; (N, h : N \rightarrow Q) \mapsto (S(h^*\xi), S(h^*\xi) \rightarrow S(\xi) \rightarrow R) . \end{aligned}$$

(ii) *For $m - q \geq 6$*

$$\Omega_m^{H, Q-\text{tr}}(P) = \Omega_m^H(P) = \Omega_m^{TOP}(P)[L_0(\mathbb{Z})] .$$

In particular, the forgetful maps $\Omega_m^{H, Q-\text{tr}}(P) \rightarrow \Omega_m^H(P)$ are isomorphisms, and every map $M^m \rightarrow P$ is bordant to a Q -transverse map.

Proof. (i) This is a formality.

(ii) Define the Q -transverse topological bordism groups $\Omega_m^{TOP, Q-\text{tr}}(P)$ by analogy with $\Omega_m^{H, Q-\text{tr}}(P)$, for which there is an exact sequence

$$\dots \rightarrow \Omega_m^{TOP}(R) \rightarrow \Omega_m^{TOP, Q-\text{tr}}(P) \rightarrow \Omega_{m-q}^{TOP}(Q) \rightarrow \Omega_{m-1}^{TOP}(R) \rightarrow \dots$$

The forgetful maps $\Omega_m^{TOP, Q-\text{tr}}(P) \rightarrow \Omega_m^{TOP}(P)$ are isomorphisms, by topological transversality. Applying the 5-lemma to the map of exact sequences

$$\begin{array}{ccccccc} \dots & \longrightarrow & \Omega_m^H(R) & \longrightarrow & \Omega_m^{H, Q-\text{tr}}(P) & \longrightarrow & \Omega_{m-q}^H(Q) \longrightarrow \dots \\ & & \downarrow \cong & & \downarrow & & \downarrow \cong \\ \dots & \longrightarrow & \Omega_m^{TOP}(R)[L_0(\mathbb{Z})] & \longrightarrow & \Omega_m^{TOP, Q-\text{tr}}(P)[L_0(\mathbb{Z})] & \longrightarrow & \Omega_{m-q}^{TOP}(Q)[L_0(\mathbb{Z})] \longrightarrow \dots \end{array}$$

we have that the morphisms

$$\Omega_m^{H, Q-\text{tr}}(P) \rightarrow \Omega_m^{TOP, Q-\text{tr}}(P)[L_0(\mathbb{Z})] ; (M, f : M \rightarrow P) \mapsto (M_{TOP}, f_{TOP})[i(M)]$$

are isomorphisms for $m - q \geq 6$, exactly as in the case $Q = \emptyset$. \square

We wish to improve this homology manifold transversality result from “up to bordism” to “up to normal cobordism”, using surgery theory.

We shall need the following variation of 1.5 :

Proposition 2.3. *Let $m - q \geq 7$. Given a connected m -dimensional topological manifold N , a Q -transverse map $g : N \rightarrow P$, and an element $I \in L_0(\mathbb{Z})$ there exists a degree 1 normal map $(f_I, b_I) : N_I \rightarrow N$ from a connected homology manifold N_I such that :*

(i) *The resolution obstruction of N_I in $L_0(\mathbb{Z})$ is*

$$i(N_I) = I \in L_0(\mathbb{Z}) .$$

(ii) *The composite*

$$(N_I)_{TOP} \xrightarrow{(f_{TOP}, b_{TOP})} N_I \xrightarrow{(f_I, b_I)} N$$

is normally bordant to the identity map by a normal bordism. (By a Q -transverse normal bordism, since we are in the topological category.)

(iii) *If M is a connected m -dimensional homology manifold with resolution obstruction $i(M) = I \in L_0(\mathbb{Z})$, then the composite*

$$(M_{TOP})_I \xrightarrow{(f_I, b_I)} M_{TOP} \xrightarrow{(f_{TOP}, b_{TOP})} M$$

is normally bordant to the identity map $M \rightarrow M$.

(iv) *The map (f_I, b_I) is Q -transverse.*

Proof. This result follows from the following two lemmas, whose proofs we defer.

Lemma 2.4. *Given an m -dimensional topological manifold M for $m \geq 7$, such that M is the union of two manifolds along a boundary component, $M = M_+ \cup_{M_0} M_-$. We may perform the construction of 1.5 so that the result is a homology manifold $M_I = (M_+)_I \cup_{(M_0)_I} (M_-)_I$ so that M_I and $(M_i)_I$ for $i = 0, +, -$ all satisfy the conclusion of 1.5.*

Lemma 2.5. *Given an $(m - q)$ -dimensional manifold X for $m - q \geq 7$ and a D^q -bundle ξ over X , whose total space is $E(\xi)$ we may construct a homology manifold E_I with a map*

$$f_I : E_I \rightarrow E(\xi)$$

which satisfies the properties of 2.3. In particular $f_I^{-1}(X) = X_I$ is a homology manifold such that E_I is the total space of the bundle f_I^ξ and*

$$f_I| : X_I \rightarrow X$$

also satisfies the properties of 1.5.

Denote $g^{-1}(Q)$ by N_Q and $g^{-1}(R)$ by N_R , so that $(N_Q, N_R, g^*\xi)$ is a codimension q bundle subspace of N with

$$N = E(g^*\xi) \cup N_R.$$

By applying Lemma 2.5 to $E(g^*\xi)$, we get

$$(f_I)_E : E_I \rightarrow E(g^*\xi)$$

satisfying the above conditions. Applying 1.5 to N_R results in

$$(f_I)_R : R_I \rightarrow N_R.$$

By Lemma 2.4 we may apply the construction to N_R and $E(g^*\xi)$ simultaneously so that the resulting homology manifolds R_I and E_I and maps agree on their boundaries. \square

Proof of Lemma 2.4: Take a manifold two-skeleton of M which is the union of manifold two skeletons for M_+ and M_- along a manifold two skeleton for M_0 . Denote this two skeleton and its boundary by

$$B = B_+ \cup_{B_0} B_- \text{ and } D = D_+ \cup_{D_0} D_-.$$

We shall perform the construction of 1.5 simultaneously on M_+ and M_- . What was one controlled surgery obstruction in the original construction

$$\sigma = (0, I) \in H_m(M; \overline{\mathbb{L}}_\bullet)$$

is now two controlled surgery obstructions

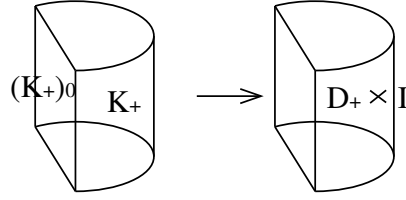
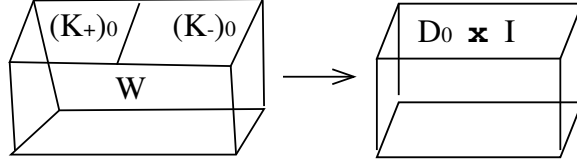
$$\sigma_+ = (0, I) \in H_m(M_+; \overline{\mathbb{L}}_\bullet), \quad \sigma_- = (0, I) \in H_m(M_-; \overline{\mathbb{L}}_\bullet).$$

In Step I, we apply [1] (4.4) to get a map $q_0 : M \rightarrow M$ which restricts to UV^1 maps $D_i \rightarrow M_i$, $i = 0, +, -$ and is itself UV^1 . Thus the controlled surgery obstruction groups are given by

$$L^c \left(\begin{array}{c} D_i \times [0, 1] \\ \downarrow \\ M_\pm \end{array} \right) \cong H_m(M_\pm; \overline{\mathbb{L}}_\bullet) \cong H_m(M_\pm; \mathbb{L}_\bullet) \oplus H_m(M_\pm; L_0(\mathbb{Z})).$$

Since M_\pm are manifolds with boundary, $m \geq 7$ is required. Take a Wall realization K_\pm of $(0, I)$. Glue this into M_\pm to create the first Poincaré space of the construction, which comes with a map $p_0 : X_0 \rightarrow M$ and a Poincaré decomposition $X_0 = (X_0)_+ \cup (X_0)_-$ which is respected by p_0 .

We must exercise some care to get the Wall realizations to agree on their boundaries.

FIGURE 4. The Wall realization K_+ .FIGURE 5. The trace of surgery on $(K_+)_0 \cup (K_-)_0 \rightarrow D_0 \times [0, 1]$ can be used to “match up” the boundaries of the Wall realizations.

Denote $\partial K_{\pm} = (K_{\pm})_0$. The images of $(K_{\pm})_0 \rightarrow D_0 \times [0, 1]$ agree in

$$L^c \left(\begin{array}{c} D_0 \times [0, 1] \\ \downarrow \\ M_0 \end{array} \right) \cong H_{m-1}(M_0; \overline{\mathbb{L}}_{\bullet}) .$$

Each is again $(0, I)$, the image of $(0, I)$ under the boundary maps

$$H_m(M_{\pm}; \overline{\mathbb{L}}_{\bullet}) \rightarrow H_{m-1}(M_0; \overline{\mathbb{L}}_{\bullet}) .$$

Since the surgery obstructions of $\partial K_+ = (K_+)_0$ and $\partial K_- = (K_-)_0$ agree we may glue them together along their common boundary D_0 to get a normal invariant with vanishing controlled surgery obstruction, i.e. we may surger the map

$$\partial K_+ \cup \partial K_- \rightarrow D_0 \times [0, 1]$$

to a controlled homotopy equivalence. Let W denote the trace of this surgery. Denote $K'_- = K_- \cup_{(K_-)_0} W$, and extend the map $K_- \rightarrow D_- \times [0, 1]$ in the obvious way. It is a Wall realization of $(0, I)$, which agrees with K_+ on its boundary.

If we perform the construction with two Wall realizations which agree on their boundaries, then we may glue them together to get $X_0 = (X_0)_+ \cup (X_0)_-$. Furthermore since the boundary of the Wall realizations is itself a Wall realization, the intersection

$$(X_0)_+ \cap (X_0)_-$$

is itself the first stage of the given construction on M_0 . Similarly the union X_0 , which is the result of gluing in the union of the Wall realizations is the first stage of the construction on M .

To preserve this decomposition throughout the construction requires only that we repeat the above type of construction in later steps. \square

Proof of Lemma 2.5: Let B_X denote a manifold two skeleton of X . Since $E(\xi)$ and X are of the same homotopy type we could easily construct a manifold two skeleton of $E(\xi)$ by thickening a manifold two skeleton of X , i.e. $E(c^*\xi)$ where $c : B_X \rightarrow X$. Recall that the construction requires a fine manifold two skeleton.

Let E_X denote the manifold two skeleton of an ϵ neighborhood of X in $E(\xi)$. We may extend this to a fine manifold two skeleton of $E(\xi)$ by

$$B = E_X \cup B_S$$

where B_S is a manifold two skeleton of the complement of the given ϵ neighborhood of X .

Here $E_X \cap B_S$ is the manifold two skeleton of $S(\xi)$ for the given ϵ -sphere bundle. We shall now perform the construction of 2.4 on this decomposition of $E(\xi)$, but with the added requirement that the result of the construction on the small neighborhood of X is itself a bundle over the desired X_I . This is done by preserving the bundle throughout the construction. Take a Wall realization of

$$(0, I) \in H_{m-q}(X; \overline{\mathbb{L}}_\bullet)$$

denoted by

$$\sigma_X : N_X \rightarrow D_X \times [0, 1] .$$

Let σ_E denote the bundle map on the pullback

$$N_E = \sigma_X^* \xi'$$

where ξ' is the bundle induced on $D_X \times [0, 1]$ by ξ . The result is

$$\sigma_E : N_E \rightarrow E(\xi|D_X \times [0, 1]) ,$$

the image of σ_X under the transfer map. The corresponding surgery obstruction is thus the image of $(0, I)$ under the transfer map

$$H_{m-q}(X; \overline{\mathbb{L}}_\bullet) \rightarrow H_m(E(\xi); \overline{\mathbb{L}}_\bullet) .$$

One need only check that this map takes $(0, I)$ to $(0, I)$ to see that we may preserve the bundle throughout the construction. \square

Given X a simple m -dimensional Poincaré space with a map $g : X \rightarrow P$ to a space P with a codimension q bundle subspace $Q \subset P$. Let $\mathcal{T}^{H, Q-\text{tr}}(X)$ be the set of bordism classes of normal maps $(f, b) : M \rightarrow X$ from m -dimensional homology manifolds such that $gf : M \rightarrow P$ is transverse to $Q \subset P$.

Theorem 2.6. *Given X , $g : X \rightarrow P$ and $Q \subset P$ as above such that $m - q \geq 7$.*

- (i) *The forgetful function $\mathcal{T}^{H, Q-\text{tr}}(X) \rightarrow \mathcal{T}^H(X)$ is a bijection.*
- (ii) *Every map $f : M \rightarrow P$ from an m -dimensional homology manifold is bordant to a map transverse to $Q \subset P$.*

Proof. (i) The functions

$$\mathcal{T}^H(X) \rightarrow \mathcal{T}^{TOP}(X) \times L_0(\mathbb{Z}); ((f, b) : M \rightarrow X) \mapsto ((f_{TOP}, b_{TOP}), i(M)) ,$$

$$\mathcal{T}^{H, Q-\text{tr}}(X) \rightarrow \mathcal{T}^{TOP, Q-\text{tr}}(X) \times L_0(\mathbb{Z}); ((f, b) : M \rightarrow X) \mapsto ((f_{TOP}, b_{TOP}), i(M))$$

are bijections by Theorem 1.1 and its Q -transverse variation 2.3. The forgetful function

$$\mathcal{T}^{TOP, Q-\text{tr}}(X) \rightarrow \mathcal{T}^{TOP}(X)$$

is a bijection by topological transversality, so that

$$\mathcal{T}^{H, Q-\text{tr}}(X) = \mathcal{T}^{TOP, Q-\text{tr}}(X) \times L_0(\mathbb{Z}) = \mathcal{T}^{TOP}(X) \times L_0(\mathbb{Z}) = \mathcal{T}^H(X) .$$

- (ii) Unfortunately (i) does not apply to an arbitrary map. We may get around this by factoring any map $f : M \rightarrow P$ through a homotopy equivalence $\hat{f} : M \rightarrow \overline{P}$. Any map f is homotopic to $\hat{f} \circ \bar{f}$ such that $\hat{f} : \overline{P} \rightarrow P$ is a Serre fibration and \bar{f} is

a homotopy equivalence. Now by (i), \bar{f} is normally cobordant to a transverse map, and hence f is bordant to a transverse map. \square

Given X a simple m -dimensional Poincaré duality space with a map $g : X \rightarrow P$, as above, we may also study the Q -transverse homology manifold structure set. Denoted by, $\mathcal{S}^{H, Q-\text{tr}}(X)$, this is the set of equivalence classes of pairs (M, h) with M an m -dimensional homology manifold and $h : M \rightarrow X$ a simple homotopy equivalence such that $gh : M \rightarrow P$ is transverse to $Q \subset P$, with $(M_1, h_1) \simeq (M_2, h_2)$ if there exists an s -cobordism $(W; M_1, M_2)$ with a simple homotopy equivalence of the type

$$(f; h_1, h_2) : (W; M_1, M_2) \rightarrow X \times ([0, 1]; \{0\}, \{1\})$$

such that the composite

$$W \xrightarrow{f} X \times [0, 1] \xrightarrow{\text{proj.}} X \xrightarrow{g} P$$

is transverse to $Q \subset P$.

Remark 2.7. The isomorphism

$$\mathcal{S}^{H, Q-\text{tr}}(X) \cong \mathcal{S}^H(X)$$

will follow from s -transversality for homology submanifolds, Theorem 4.1, just as Theorem 2.6 followed from 2.3.

Before dealing with transversality up to s -cobordism, we turn our attention to some splitting theorems. These theorems follow directly from transversality up to normal bordism and are useful in the proof of transversality up to s -cobordism.

3. CODIMENSION q SPLITTING OF HOMOLOGY MANIFOLDS

Fix a space P with a codimension q bundle subspace (Q, R, ξ) , as in Section 2.

Wall [18] (Chapter 11) defined the codimension q splitting obstruction groups $LS_*(\Phi)$ to fit into an exact sequence

$$\begin{aligned} \cdots \rightarrow L_{m+1}(\mathbb{Z}[\pi_1(R)]) &\rightarrow \mathbb{Z}[\pi_1(P)] \rightarrow LS_{m-q}(\Phi) \\ &\rightarrow L_{m-q}(\mathbb{Z}[\pi_1(Q)]) \xrightarrow{\xi^!} L_m(\mathbb{Z}[\pi_1(R)]) \rightarrow \mathbb{Z}[\pi_1(P)] \rightarrow \cdots \end{aligned}$$

with $\xi^!$ the transfer maps induced by ξ .

From now on, we assume that P is an m -dimensional Poincaré space and that $Q \subset P$ is an $(m - q)$ -dimensional Poincaré subspace, with $(R, S(\xi))$ an m -dimensional Poincaré pair.

Definition 3.1. (i) A simple homotopy equivalence $f : M \rightarrow P$ from an m -dimensional homology manifold *splits along* $Q \subset P$ if f is s -cobordant to a simple homotopy equivalence (also denoted by f) which is transverse to $Q \subset P$

$$f = E(g) \cup_{S(g)} h : M = E(g^*\xi) \cup_{S(g^*\xi)} Z \rightarrow P = E(\xi) \cup_{S(\xi)} R$$

and such that the restrictions

$$g = f| : N = f^{-1}(Q) \rightarrow Q, \quad h = f| : Z = f^{-1}(R) \rightarrow R$$

are simple homotopy equivalences.

(ii) The *split structure set* $\mathcal{S}^H(P, Q, \xi)$ is the set of homology manifold structures on P which split along $Q \subset P$.

For any simple homotopy equivalence $f : M \rightarrow P$ from an m -dimensional topological manifold M there is defined a codimension q splitting obstruction

$$s_Q(f) \in LS_{m-q}(\Phi)$$

such that $s_Q(f) = 0$ if (and for $m-q \geq 5$ only if) f splits in the topological manifold category. The image of $s_Q(f)$ in $L_{m-q}(\mathbb{Z}[\pi_1(Q)])$ is the surgery obstruction $\sigma_*(g)$ of the normal map $g = f| : N = f^{-1}(Q) \rightarrow Q$ obtained by topological transversality. See Wall [18] (Chapter 11) and Ranicki [15] (pp. 572–577) for details.

Theorem 3.2. *Let $m - q \geq 7$.*

- (i) *A simple homotopy equivalence $f : M \rightarrow P$ from an m -dimensional homology manifold with a codimension q bundle subspace (Q, R, ξ) splits along $Q \subset P$ if and only if an obstruction $s_Q(f) \in LS_{m-q}(\Phi)$ vanishes.*
- (ii) *The split homology manifold structure set $\mathcal{S}^H(P, Q, \xi)$ fits into an exact sequence*

$$\cdots \rightarrow LS_{m-q+1}(\Phi) \rightarrow \mathcal{S}^H(P, Q, \xi) \rightarrow \mathcal{S}^H(P) \rightarrow LS_{m-q}(\Phi) .$$

Proof. Define $LS_{m-q}^H(\Phi)$ to be the group of obstructions in the exact sequence

$$\mathcal{S}^H(P, Q, \xi) \rightarrow NI^{H, Q-\text{th}}(X) \rightarrow LS_{m-q}^H(\Phi) .$$

Consider the homology manifold normal invariant given by $f : M \rightarrow P$, by 2.6 f is normally bordant, say via $W \rightarrow P \times I$ to a map $g : M' \rightarrow P$ such that g is transverse to Q . In particular $g^{-1}(Q) = Y$ is a homology manifold with a normal neighborhood $N(Y) = g^*(\xi)$.

Thus, this transverse normal invariant defines a splitting obstruction which lives in $LS_{m-q}^H(\Phi)$. Since we do not a priori have an understanding of $LS_{m-q}^H(\Phi)$ we must study it by comparing to the obstruction groups $L_{m+1}(\pi_1(R) \rightarrow \pi_1(P))$, $L_{m-q}(Q)$ and the surgery exact sequences for $\mathcal{S}^H(P \times [0, 1], R \times 0)$ and $\mathcal{S}^H(Q)$.

There is clearly a commutative diagram with vertical maps given by restriction as follows:

$$\begin{array}{ccccc} \mathcal{S}^H(P \times I, R \times 0) & \longrightarrow & NI^H(P \times I, R \times 0) & \longrightarrow & L_{m+1}(R \rightarrow P) \\ \downarrow & & \downarrow & & \downarrow \\ \mathcal{S}^H(P, Q, \xi) & \longrightarrow & NI^{H, Q-\text{th}}(P) & \longrightarrow & LS_{m-q}^H(\Phi) \\ \downarrow & & \downarrow & & \downarrow \\ \mathcal{S}^H(Q) & \longrightarrow & NI^H(Q) & \longrightarrow & L_{m-q}(Q) \end{array}$$

The splitting obstruction $\sigma(f) \in LS_{m-q}^H(\Phi)$ can be understood as a two stage obstruction as follows. First the normal invariant $g| : Y \rightarrow Q$ defines an obstruction $\sigma_Q(f) \in L_{m-q}(Q)$. If this obstruction vanishes, then by the surgery exact sequence of [1] $g| : Y \rightarrow Q$ is normally cobordant to a simple homotopy equivalence. Let $V \rightarrow Q \times [0, 1]$ denote this normal cobordism, and $N(V) \rightarrow E(\xi) \times [0, 1]$ denote the corresponding pullback of ξ . We can define a homology manifold normal invariant of $P \times [0, 1] \text{ rel } P \times 0, E(\xi) \times 1$ by gluing $N(V)$ to W . There is now defined an obstruction $\sigma_R(f) \in L_{m+1}(\pi_1(R) \rightarrow \pi_1(P))$ to this normal invariant being equivalent to a simple homotopy equivalence of $P \times [0, 1]$, i.e. an s-cobordism from $f : M \rightarrow P$ to some map $h : N \rightarrow P$.

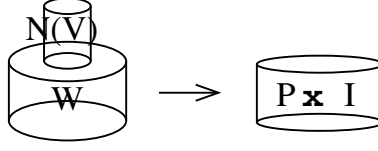


FIGURE 6. A homology manifold normal invariant of $(P \times [0, 1], R \times 0)$.

If $\sigma(f) \in LS_{m-q}(\Phi)$ vanishes, then both $\sigma_Q(f)$ and $\sigma_R(f)$ are defined and vanish, so that f is s -cobordant to a split map. Conversely if f is s -cobordant to a split map, then both of $\sigma_Q(f)$ and $\sigma_R(f)$ are defined and vanish. \square

Example 3.3. (i) If $q = 1$, ξ is trivial, and $R = R_1 \sqcup R_2$ is disconnected with $\pi_1(Q) \cong \pi_1(R_1)$, then $LS_*(\Phi) = 0$, there is no obstruction in Theorem 3.2, and

$$\mathcal{S}^H(P) = \mathcal{S}^H(P, Q, \xi) .$$

This is the homology manifold π - π codimension 1 splitting theorem already obtained by Johnston [6].

(ii) If $q \geq 3$ the codimension q splitting obstruction is just the ordinary surgery obstruction

$$s_Q(f) = \sigma_*(g) \in LS_{m-q}(\Phi) = L_{m-q}(\mathbb{Z}[\pi_1(Q)])$$

of the restriction $g = f| : f^{-1}(Q) \rightarrow Q$, with an exact sequence

$$\cdots \rightarrow L_{m-q+1}(\mathbb{Z}[\pi_1(Q)]) \rightarrow \mathcal{S}^H(P, Q, \xi) \rightarrow \mathcal{S}^H(P) \rightarrow L_{m-q}(\mathbb{Z}[\pi_1(Q)]) .$$

This is the homology manifold Browder splitting theorem already obtained by Johnston [6]. \square

4. HOMOLOGY SUBMANIFOLD TRANSVERSALITY UP TO s -COBORDISM

We proceed to prove homology manifold transversality up to s -cobordism, using the above results.

Theorem 4.1. *Let $f : M \rightarrow P = E(\xi) \cup_{S(\xi)} R$ be a map from an m -dimensional homology manifold M to a space P with a codimension q bundle subspace (Q, R, ξ) . If $m - q \geq 7$ then f is s -transverse to $Q \subset P$.*

Proof. For $Q \subset P$ of codimension $q \geq 3$ this was proved in [6].

We prove the theorem here for codimension $q = 1, 2$. First we may assume that the map $f : M \rightarrow P$ is a homotopy equivalence by factoring the original map through a Serre fibration. This results in

$$M \xrightarrow{\hat{f}} \overline{P} \xrightarrow{\overline{f}} P ,$$

homotopic to the original f so that \hat{f} is a homotopy equivalence, \overline{f} is a Serre fibration, and \overline{P} has a codimension q subset \overline{Q} so that the normal bundle of \overline{Q} in \overline{P} is the pullback of the normal bundle of Q in P . To achieve Q -transversality for f clearly it would suffice to achieve \overline{Q} transversality for \hat{f} . Thus we may assume that $f : M \rightarrow P$ is a homotopy equivalence. By theorem 2.6 (ii) we have that f is

bordant to a Q -transverse map. From here the proof proceeds in two steps, given by the following lemma.

Lemma 4.2. *If $f : M \rightarrow P$ is a homotopy equivalence as above and*

$$F : W \rightarrow P \times [0, 1]$$

is a homology manifold bordism from f to $g : M' \rightarrow P$, then

- (i) *The map f is homotopy equivalent to a map $\bar{g} : M \rightarrow P$, which factors through a homotopy equivalence to a Poincaré space X , $h : M \rightarrow X$ with $g'' : X \rightarrow P$ such that $\bar{g} = g'' \circ h$, and g'' is Poincaré transverse to Q , i.e. the inverse image of Q is a Poincaré space with normal bundle the pullback of the normal bundle of Q .*
- (ii) *The map \bar{g} is s -cobordant to a Q -transverse map.*

□

Proof of Lemma 4.2 (i): The key idea of this proof is to use a patch space structure on W to achieve the desired result. Because W is a homology manifold, it has a patch space structure with only two patches. Let

$$H : W' \rightarrow W$$

be such a structure, where

$$W' = W_+ \cup_{W_0} W_-$$

gives W as a union of manifolds glued along a homotopy equivalence

$$h_W : W_0 \rightarrow W_0 .$$

Furthermore we may assume that

$$\partial W' = X \amalg X'$$

is such that

$$H| : \partial W' \rightarrow M \amalg M'$$

restricts to two patch space structures

$$X = X_+ \cup X_-$$

and

$$X' = X'_+ \cup X'_-$$

with gluing maps

$$h_X : X_0 \rightarrow X_0$$

and

$$h_{X'} : X'_0 \rightarrow X'_0$$

on each of M and M' .

We construct a patch space structure for M' as follows: First construct a patch space structure

$$H| : Q'' \rightarrow Q'$$

for the homology manifold $Q' = g^{-1}(Q)$. Thicken this patch space structure to a patch space structure for $\nu(Q')$ the pullback of the normal bundle of Q . Then construct a patch space structure for

$$M' \setminus \nu(Q')$$

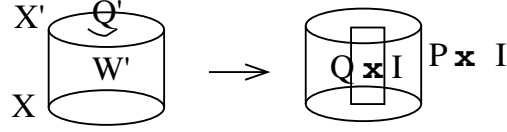


FIGURE 7. We would like to extend Poincaré transversality for the map G from X' to all of W' .

relative to the structure for $\partial\nu(Q')$. Finally construct a patch space structure for W relative to this structure for M' . In this manner a patch space structure for W is constructed so that the map

$$g \circ H| : X' \rightarrow P \times \{1\}$$

is Poincaré transverse to Q .

Consider the map

$$G = F \circ H : W' \rightarrow W \rightarrow P \times [0, 1] .$$

We shall show that G is homotopic rel X' to a map which is Poincaré transverse to Q . First consider $G|_{W_+}$. We may use manifold transversality to make this map transverse to

$$Q \times [0, 1] \subset P \times [0, 1] ,$$

which inherits a codimension- q structure from $Q \subset P$. If the homotopy equivalence

$$h_W : W_0 \rightarrow W_0$$

splits along

$$Q_0 = (G|_{W_+})^{-1}(Q \times [0, 1]) \cap W_0 ,$$

then $G|_{W_-}$ is $Q \times [0, 1]$ -transverse along its boundary W_0 and we may use manifold transversality to homotope $G|_{W_-}$ rel W_0 to a Q -transverse map. Unfortunately there is no guarantee that the homotopy equivalence h_W splits along Q_0 . There is a priori a splitting obstruction $\sigma \in LS_{m-q}(\Phi)$ where Φ is defined by the pair $Q_0 \subset W_0$.

We shall show that by changing to a different patch space structure $\overline{H} : \overline{W} \rightarrow W$, we may assume that this obstruction vanishes. First we need to change the patch space structure slightly so that $LS_{m-q}(\Phi)$ acts on the set of possible patch space structures. Our action will be by $LS_{m-q}(\Psi)$ where Ψ is defined by the pair $Q'' \subset X'$.

The first step is to show that we may assume

$$LS_{m-q}(\Phi) \cong LS_{m-q}(\Psi) .$$

This is achieved by performing Poincaré surgery to fix the fundamental groups of Q_0 and W_0 , but these are the boundaries of the manifold two skeletons of

$$Q' = (G|_{W_+})^{-1}(Q \times [0, 1])$$

and W' . Therefore the fundamental groups of $Q' \subset W'$ agree with Φ and we may view the problem of changing Φ to agree with Ψ as a problem about $Q' \subset W'$. This is just fundamental group Poincaré surgery on

$$G : W' \rightarrow P \times [0, 1] ,$$

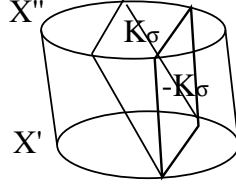


FIGURE 8. The action of σ on X' by K_σ produces a new space X'' and adds the above to W' . In particular it adds $-K_\sigma$ to W_0 .

or rather manifold surgery on the manifold two skeleton of W'

$$G| : W_+ \rightarrow W_+ .$$

Now we can assume that both $Q'' \subset X'$ and $Q_0 \subset W_0$ define the same group $LS_{m-q}(\Phi)$. This group acts on the patch space structures of X' by acting on $h_{X'}$ as follows: $L_{m-q}(Q'')$ acts on the patch space structures

$$h| : Q'' \rightarrow Q'$$

for $Q'' = Q''_+ \cup Q''_-$ by acting on the gluing homotopy equivalence

$$h_{Q''} : Q''_0 \rightarrow Q''_0 .$$

Given an element $\sigma \in L_{m-q}(Q'')$ denote its Wall realization by $\sigma : K \rightarrow Q''_0 \times [0, 1]$, where $\partial K = Q''_0 \amalg \widehat{Q}_0$. The new patch space structure is given by $\widehat{Q}'' = \widehat{Q}''_+ \cup Q''_-$ where $\widehat{Q}''_+ = Q''_+ \cup_{id_{Q''_0}} K$. The new gluing map is now $h_{\widehat{Q}''} = \sigma|_{\widehat{Q}''}$. A Poincaré bordism from Q'' to \widehat{Q}'' is given by $\widehat{Q}''_+ \times [0, 1] \cup_\sigma Q''_- \times [0, 1]$. where σ is viewed as a map $\sigma : K \times 0 \rightarrow Q''_0 \times [0, 1]$. The group $L_m(X' \setminus Q'')$ acts similarly on the structure

$$h_X| : X'_0 \setminus Q''_0 \rightarrow X'_0 \setminus Q''_0 .$$

The fact that we really had an element of $LS_{m-q}(\Phi)$ insures that the Wall realizations will glue together to a composite we denote K_σ and that the patch spaces will glue together to give a new patch space structure, X'' .

Claim: The action of

$$\sigma \in LS_{m-q}(\Psi)$$

results in a new patch space structure whose transversality obstruction differs by $-\sigma$ from the previous one, i.e. with the correct choice of σ the transversality obstruction vanishes.

Proof of claim: If we consider the addition of $K_\sigma \times [0, 1]$ as in the diagram, it becomes clear that we have changed W_0 by $-K_\sigma$.

The map G is now homotopic to a Poincaré transverse map, and $G|_X$ is the desired map g'' Poincaré transverse to Q . The original map f is homotopic to $g'' \circ h$ where $h : M \rightarrow X$ is the homotopy inverse of $H| : X \rightarrow M$. \square

Proof of 4.2 (ii): Suppose given

$$\overline{g} = g'' \circ h : M \rightarrow P ,$$

for the homotopy equivalence $h : M \rightarrow X$ and the Poincaré transverse map $g'' : X \rightarrow P$. Let Q' denote $(g'')^{-1}(Q)$, so that by assumption Q' is a Poincaré space. If

h is s -cobordant to a homotopy equivalence $\widehat{h} : \widehat{M} \rightarrow X$ which is split over Q' then $g'' \circ \widehat{h}$ is homology manifold transverse to Q . There is an obstruction σ to splitting h which lives in $LS_{m-q}(\Phi)$ where Φ is defined by the pair $Q' \subset X$. Let σ denote this obstruction.

Because Q' was constructed by the method of 4.2 (i), it has a two patch structure

$$Q' = Q'_+ \cup Q'_- \text{ and } Q'_0 = Q'_+ \cap Q'_-$$

which agrees with the two patch space structure of X , i.e. $Q'_+ \subset X_+$, $Q'_- \subset X_-$ and $Q'_0 \subset X_0$. If Ψ is defined by the pair $Q'_0 \subset X_0$ there is a natural isomorphism

$$LS_{m-q}(\Psi) \cong LS_{m-q}(\Phi) .$$

$LS_{m-q}(\Psi)$ acts on the possible patch space structures $h : M \rightarrow X$ on M as follows. Recall that by construction, the gluing map

$$h_X : X_0 \rightarrow X_0$$

splits along $Q'_0 \subset X_0$. We can change the patch space structure on X , if we make sure that it has a map to the original X which is Poincaré transverse to Q' . In particular the new map

$$h_Y : Y_0 \rightarrow Y_0$$

must split along the inverse image of Q' . Take h_X and act on it by $LS_{m-q}(\Phi)$, by acting on

$$h_{Q'}| : Q'_0 \rightarrow Q'_0$$

by $L_{m-q}(Q'_0)$ and by acting on

$$h_X| : X_0 \setminus Q'_0 \rightarrow X_0 \setminus Q'_0$$

by $L_m(X_0 \setminus Q'_0)$. The result fits together along $\partial\nu(Q')$ by definition of $LS_{m-q}(\Psi)$. By construction, there is a map $k : Y \rightarrow X$ which is a homotopy equivalence, and which is Poincaré transverse to Q' .

We claim that, if $\bar{k} : X \rightarrow Y$ is the homotopy inverse of k , then the new splitting obstruction of

$$\bar{k} \circ h : M \rightarrow X \rightarrow Y$$

vanishes. Clearly the splitting obstruction of $k \circ \bar{k} \circ h$ is the same as that of h , but by construction this splitting obstruction differs from that of $\bar{k} \circ h$ by the σ splitting obstruction of k .

Thus our new map $\bar{k} \circ h$ is s -cobordant to a homology manifold split map. Composing this homology manifold split map with the Poincaré transverse map $g'' \circ k$ we see that our original f is in fact s -cobordant to a homology manifold transverse map. \square

5. DUAL TRANSVERSALITY FOR HOMOLOGY MANIFOLDS

We now extend the results of Chapter 3 on transversality to a codimension q bundle subspace $Q \subset P$ for a map $f : M^m \rightarrow P$ from an m -dimensional homology manifold with $m - q \geq 7$, and obtain dual transversality for a map $f : M^m \rightarrow |K|$ to the polyhedron of a k -dimensional simplicial complex K with $m - k \geq 7$. In Chapter 6 we shall formulate an obstruction for a map $f : M^m \rightarrow |K|$ to be bordant to a dual transverse map – the obstruction is 0 for $m - k \geq 7$.

Let X be a simple m -dimensional Poincaré duality space with a map $g : X \rightarrow |K|$ to the polyhedron of a k -dimensional simplicial complex K .

The *dual transverse homology manifold structure set* $\mathcal{S}^{H,K-\natural}(X)$ is the set of equivalence classes of pairs (M, h) with M an m -dimensional homology manifold and $h : M \rightarrow X$ a simple homotopy equivalence such that $gh : M \rightarrow |K|$ is dual transverse, with $(M_1, h_1) \simeq (M_2, h_2)$ if there exists an s -cobordism $(W; M_+, M_2)$ with a simple homotopy equivalence of the type

$$(f; h_1, h_2) : (W; M_1, M_2) \rightarrow X \times ([0, 1]; \{0\}, \{1\})$$

such that the composite

$$W \xrightarrow{f} X \times [0, 1] \xrightarrow{proj} X \xrightarrow{g} |K|$$

is dual transverse.

Let $\mathcal{T}^{H,K-\natural}(X)$ be the set of bordism classes of normal maps $(f, b) : M \rightarrow X$ from m -dimensional homology manifolds such that $gf : X \rightarrow |K|$ is dual transverse.

Theorem 5.1. *Let $m - k \geq 7$.*

(i) *The dual transverse homology manifold structure set fits into the surgery exact sequence*

$$\cdots \rightarrow L_{m+1}(\mathbb{Z}[\pi_1(X)]) \xrightarrow{\partial} \mathcal{S}^{K,Q-\natural}(X) \xrightarrow{\eta} \mathcal{T}^{K,Q-\natural}(X) \xrightarrow{\theta} L_m(\mathbb{Z}[\pi_1(X)]) .$$

(ii) *The forgetful function $\mathcal{T}^{K,Q-\natural}(X) \rightarrow \mathcal{T}^K(X)$ is a bijection.*

(iii) *The forgetful function $\mathcal{S}^{K,Q-\natural}(X) \rightarrow \mathcal{S}^K(X)$ is a bijection. In particular, $\mathcal{S}^{K,Q-\natural}(X)$ is non-empty if and only if $\mathcal{S}^K(X)$ is non-empty.*

(iv) *Every map $f : M \rightarrow |K|$ from an m -dimensional homology manifold is dual s -transverse.*

Proof. Exactly as above. □

6. THE DUAL TRANSVERSALITY OBSTRUCTION

For any simplicial complex K let $\Omega_m^H(K)$ (resp. $\Omega_m^{H,\natural}(K)$) be the bordism group of maps $f : M \rightarrow |K|$ from m -dimensional homology manifolds (resp. dual transverse maps f). We now formulate the bordism obstruction to dual transversality for homology manifolds, as the failure of the forgetful map $\Omega_m^{H,\natural}(K) \rightarrow \Omega_m^H(K)$ to be an isomorphism.

We refer to Chapters 11,12 of Ranicki [16] for an exposition of Δ -sets, generalized homology theories, bordism spectra and assembly maps. The topological manifold bordism groups and the $\Omega_\bullet^{TOP}(\{*\})$ -coefficient generalized homology groups are the homotopy groups of spectra of Kan Δ -sets $\Omega_\bullet^{TOP}(K)$, $\mathbb{H}_\bullet(K; \Omega_\bullet^{TOP}(\{*\}))$

$$\begin{aligned} \Omega_*^{TOP}(K) &= \pi_*(\Omega_\bullet^{TOP}(K)) , \\ H_*(K; \Omega_\bullet^{TOP}(\{*\})) &= \pi_*(\mathbb{H}_\bullet(K; \Omega_\bullet^{TOP}(\{*\}))) . \end{aligned}$$

Moreover, there is defined a topological assembly map

$$A^{TOP} : \mathbb{H}_\bullet(K; \Omega_\bullet^{TOP}(\{*\})) \rightarrow \Omega_\bullet^{TOP}(K)$$

which is a homotopy equivalence by topological manifold transversality, inducing the Pontrjagin-Thom isomorphisms

$$A^{TOP} : H_*(K; \Omega_\bullet^{TOP}(\{*\})) \cong \Omega_*^{TOP}(K)$$

The combinatorial construction of $\Omega_{\bullet}^{TOP}(K)$ and A^{TOP} will now be extended to the homology manifold bordism spectra $\Omega_{\bullet}^H(K)$, $\Omega_{\bullet}^{H,\natural}(K)$ with an assembly map

$$A^H : \Omega_{\bullet}^{H,\natural}(K) = \mathbb{H}_{\bullet}(K; \Omega_{\bullet}^H(\{*\})) \rightarrow \Omega_{\bullet}^H(K) .$$

The homology assembly map A^H is only a homotopy equivalence to the extent to which homology manifolds have transversality.

The *homology manifold bordism spectrum* of a simplicial complex K

$$\Omega_{\bullet}^H(K) = \{\Omega_{\bullet}^H(K)_m \mid m \geq 0\}$$

is the Ω -spectrum with $\Omega_{\bullet}^H(K)_m$ the Kan Δ -set defined by

$$\begin{aligned} \Omega_{\bullet}^H(K)_m^{(n)} = \{ & (m+n)\text{-dimensional homology manifold } n\text{-ads} \\ & (M; \partial_0 M, \partial_1 M, \dots, \partial_n M) \text{ such that} \\ & \partial_0 M \cap \partial_1 M \cap \dots \cap \partial_n M = \emptyset, \text{ with a map } f : M \rightarrow |K| \} \end{aligned}$$

with base simplex the empty manifold n -ad \emptyset . The homotopy groups

$$\pi_m(\Omega_{\bullet}^H(K)) = \pi_{m-k}(\Omega_{\bullet}^H(K)_k) = \Omega_m^H(K) \quad (m \geq k \geq 0)$$

are the bordism groups of maps $f : M \rightarrow |K|$ from closed m -dimensional homology manifolds. Similarly for the *dual transverse bordism spectrum* $\Omega_{\bullet}^{H,\natural}(K)$, with the additional requirement that $f : M \rightarrow |K|$ be dual transverse.

Proposition 6.1. *The dual transverse bordism spectrum $\Omega_{\bullet}^{H,\natural}(K)$ coincides with the generalized $\Omega_{\bullet}^H(\{*\})$ -homology spectrum of K*

$$\Omega_{\bullet}^{H,\natural}(K) = \mathbb{H}(K; \Omega_{\bullet}^H(\{*\})) ,$$

so that on the level of homotopy groups

$$\Omega_m^{H,\natural}(K) = H_m(K; \Omega_{\bullet}^H(\{*\})) \quad (m \geq 0) .$$

Proof. Define the generalized homology spectrum $\mathbb{H}_{\bullet}(K; \Omega_{\bullet}^H(\{*\}))$ as in [16] (12.3), with an m -dimensional $\Omega_{\bullet}^H(\{*\})$ -coefficient cycle ([16], 12.17)

$$x = \{M(\sigma)^{m-|\sigma|} \mid \sigma \in K\}$$

essentially the same as a dual transverse map

$$f(x) : M^m = \bigcup_{\sigma \in K} M(\sigma) \rightarrow |K|$$

from a closed m -dimensional homology manifold, with inverse images the $(m-|\sigma|)$ -dimensional homology manifolds with

$$f(x)^{-1}(D(\sigma, K), \partial D(\sigma, K)) = (M(\sigma), \partial M(\sigma)) \quad (\sigma \in K) .$$

The homotopy group

$$\pi_m(\mathbb{H}_{\bullet}(K; \Omega_{\bullet}^H(\{*\}))) = H_m(K; \Omega_{\bullet}^H(\{*\}))$$

is the cobordism group of such cycles, and is the bordism group of dual transverse maps $f : M \rightarrow |K|$ from m -dimensional homology manifolds. \square

The *homology assembly map* of spectra

$$A^H : \Omega_{\bullet}^{H, \natural}(K) = \mathbb{H}_{\bullet}(K; \Omega_{\bullet}^H(\{*\})) \rightarrow \Omega_{\bullet}^H(K)$$

is defined as in [16] (12.18), inducing on the level of homotopy groups the assembly maps of bordism groups

$$A^H : \Omega_*^{H, \natural}(K) = H_*(K; \Omega_{\bullet}^H(\{*\})) \rightarrow \Omega_*^H(K)$$

which forget dual transversality.

Definition 6.2. Given an m -dimensional homology manifold

$$M = \bigcup_{\alpha} M_{\alpha}$$

with M_{α} the components of M , set

$$\mathcal{I}(M) = \sum_{\alpha} [M_{\alpha}] i(M_{\alpha}) \in H_m(M)[L_0(\mathbb{Z})] ,$$

with $[M_{\alpha}] \in H_m(M)$ the image of the fundamental class $[M_{\alpha}] \in H_m(M_{\alpha})$.

The augmentation map

$$H_m(M)[L_0(\mathbb{Z})] \rightarrow H_m(M; L_0(\mathbb{Z})) = H_m(M) \otimes_{\mathbb{Z}} L_0(\mathbb{Z}) ; x[y] \rightarrow x \otimes y$$

sends $\mathcal{I}(M)$ to the resolution obstruction of M

$$i(M) = \sum_{\alpha} i(M_{\alpha}) \in H_m(M; L_0(\mathbb{Z})) = \sum_{\alpha} L_0(\mathbb{Z}) .$$

We shall now verify that $\mathcal{I}(M, f)$ and $\tilde{\mathcal{I}}(M, f)$ are bordism invariants:

Proposition 6.3. *Let $f : M \rightarrow |K|$ be a map from an m -dimensional homology manifold M to a polyhedron, and let $M = \bigcup_{\alpha} M_{\alpha}$ be the decomposition of M into components with $f_{\alpha} = f| : M_{\alpha} \rightarrow |K|$.*

(i) *The element*

$$\mathcal{I}(M, f) = \sum_{\alpha} (f_{\alpha})_* [M_{\alpha}] [i(M_{\alpha})] \in H_m(K)[L_0(\mathbb{Z})]$$

is a homology manifold bordism invariant.

(ii) *If f is a dual transverse map then*

$$\mathcal{I}(M, f) = 0 \in H_m(K)[L_0(\mathbb{Z})] .$$

(iii) *If $f_* : H_m(M) \rightarrow H_m(K)$ is an isomorphism and f is homology manifold bordant to a dual transverse map then*

$$i(M) = 0 \in H_m(M; L_0(\mathbb{Z})) .$$

Proof. (i) Given a bordism

$$(g; f, f') : (W; M, M') \rightarrow |K| .$$

Denote the connected components by

$$(g_{\alpha}; f_{\alpha}, f'_{\alpha}) : (W_{\alpha}; M_{\alpha}, M'_{\alpha}) \rightarrow |K| .$$

We have

$$(f_{\alpha})_* [M_{\alpha}] = (f'_{\alpha})_* [M'_{\alpha}] \in H_m(K)$$

as usual.

Furthermore

$$i(M_\alpha) = i(W_\alpha) = i(M'_\alpha)$$

follows from the fact that $i(X) = i(\partial X)$ for any connected homology manifold with non-empty boundary (Quinn [12], 1.1). Thus we have

$$\begin{aligned} \mathcal{I}(M, f) &= \sum_{\alpha} (f_\alpha)_* [M_\alpha] [i(M_\alpha)] \\ &= \sum_{\alpha'} (f'_{\alpha'})_* [i(M_{\alpha'})] = \mathcal{I}(M', f') \in H_m(K)[L_0(\mathbb{Z})] . \end{aligned}$$

(ii) The augmentation map

$$H_m(K)[L_0(\mathbb{Z})] \rightarrow H_m(K; L_0(\mathbb{Z})) = H_m(K) \otimes_{\mathbb{Z}} L_0(\mathbb{Z}) ; x[y] \rightarrow x \otimes y$$

sends $\mathcal{I}(M, f)$ to $f_* i(M) \in H_m(K; L_0(\mathbb{Z}))$, for any map $f : M \rightarrow |K|$. If M is connected then $i(M) \in L_0(\mathbb{Z})$ and

$$\mathcal{I}(M, f) = f_* [M] [i(M)] \in H_m(K) [i(M)] \subset H_m(K) [L_0(\mathbb{Z})] ,$$

so that $f_* i(M) = 0$ implies $\mathcal{I}(M, f) = 0$. If $f : M \rightarrow |K|$ is dual transverse

$$f_* i(M) = \sum_{\sigma \in K^{(m)}} i(f^{-1} D(\sigma, K)) \sigma \in H_m(K; L_0(\mathbb{Z})) .$$

Each $f^{-1} D(\sigma, K)$ is a 0-dimensional homology manifold, which is a disjoint union of points, with resolution obstruction $i(f^{-1} D(\sigma, K)) = 0$, so that $f_* i(M) = 0$. Thus if M is connected and $f : M \rightarrow |K|$ is dual transverse then $f_* i(M) = 0$, and hence $\mathcal{I}(M, f) = 0$. Apply this to each component of M .

(iii) Combine (i) and (ii). □

Definition 6.4. (i) For any space X define a morphism

$$\mathcal{I} : \Omega_m^H(X) \rightarrow H_m(X)[L_0(\mathbb{Z})] ; (M, f) \mapsto \mathcal{I}(M, f) = f_* \mathcal{I}(M)$$

such that

$$i : \Omega_m^H(X) \xrightarrow{\mathcal{I}} H_m(X)[L_0(\mathbb{Z})] \rightarrow H_m(X; L_0(\mathbb{Z})) ; (M, f) \mapsto f_* i(M)$$

and

$$\Omega_m^H(X) \xrightarrow{\mathcal{I}} H_m(X)[L_0(\mathbb{Z})] \xrightarrow{proj.} H_m(X) ; (M, f) \mapsto f_* [M] .$$

(ii) Let

$$\tilde{L}_0(\mathbb{Z}) = L_0(\mathbb{Z}) \setminus \{0\} ,$$

and let

$$\tilde{\mathcal{I}} : \Omega_m^H(X) \xrightarrow{\mathcal{I}} H_m(X)[L_0(\mathbb{Z})] \rightarrow H_m(X)[\tilde{L}_0(\mathbb{Z})] .$$

For any Ω -spectrum $X_\bullet = \{X_n \mid n \geq 0\}$ of Δ -sets there is defined an Ω -spectrum of Δ -sets

$$X_\bullet[L_0(\mathbb{Z})] = \{X_n[L_0(\mathbb{Z})] \mid n \geq 0\}$$

with

$$\pi_m(X[L_0(\mathbb{Z})]) = \pi_m(X)[L_0(\mathbb{Z})] \quad (m \geq 0) .$$

Proposition 6.5. *Let K be a k -dimensional simplicial complex.*

(i) *The map of Ω -spectra*

$$\Omega_{\bullet}^H(K) \rightarrow \Omega_{\bullet}^{TOP}(K)[L_0(\mathbb{Z})] ; M \mapsto M_{TOP}[i(M)]$$

induces maps

$$\pi_m(\Omega_{\bullet}^H(K)) = \Omega_m^H(K) \rightarrow \pi_m(\Omega_{\bullet}^{TOP}(K)[L_0(\mathbb{Z})]) = \Omega_m^{TOP}(K)[L_0(\mathbb{Z})]$$

which are isomorphisms for $m \geq 6$.

(ii) *The composite*

$$\Omega_m^{H,\natural}(K) \xrightarrow{A^H} \Omega_m^H(K) \xrightarrow{\tilde{\mathcal{I}}} H_m(K)[\tilde{L}_0(\mathbb{Z})]$$

is 0.

(iii) *The homology assembly map*

$$A^H : \Omega_m^{H,\natural}(K) = H_m(K; \Omega_{\bullet}^H(\{*\})) \rightarrow \Omega_m^H(K)$$

is an isomorphism for $m - k \geq 6$.

Proof. (i) See Johnston [6] (cf. Corollary 1.6).

(ii) By Proposition 6.3

$$\text{im}(\mathcal{I}A^H : \Omega_m^{H,\natural}(K) \rightarrow H_m(K)[L_0(\mathbb{Z})]) \subseteq H_m(K)[0] \subseteq H_m(K)[L_0(\mathbb{Z})] ,$$

so that $\tilde{\mathcal{I}}A^H = 0$.

(iii) By (i) we have that the maps of Kan Δ -sets

$$\Omega_{\bullet}^H(\{*\})_n \rightarrow \Omega_{\bullet}^{TOP}(\{*\})_n[L_0(\mathbb{Z})] ; M \mapsto M_{TOP}[i(M)]$$

are homotopy equivalences for $n \geq 6$. It follows that for $m \geq k + 6$

$$\mathbb{H}(K; \Omega_{\bullet}^H(\{*\}))_m \simeq \mathbb{H}(K; \Omega_{\bullet}^{TOP}(\{*\}))_m[L_0(\mathbb{Z})]$$

and hence that

$$\begin{aligned} H_m(K; \Omega_{\bullet}^H(\{*\})) &= \pi_0(\mathbb{H}(K; \Omega_{\bullet}^H(\{*\}))_m) \\ &= \pi_0(\mathbb{H}(K; \Omega_{\bullet}^{TOP}(\{*\}))_m[L_0(\mathbb{Z})]) \\ &= H_m(K; \Omega_{\bullet}^{TOP}(\{*\}))_m[L_0(\mathbb{Z})] \\ &= \Omega_m^{TOP}(K)[L_0(\mathbb{Z})] = \Omega_m^H(K) . \end{aligned}$$

□

Theorem 6.6. (i) *The composite*

$$\Omega_m^{H,\natural}(K) \rightarrow \Omega_m^H(K) \xrightarrow{\tilde{\mathcal{I}}} H_m(K)[\tilde{L}_0(\mathbb{Z})]$$

is 0. Thus if $f : M \rightarrow |K|$ is homology manifold bordant to a dual transverse map then

$$\mathcal{I}(M, f) \in H_m(K)[0] \subset H_m(K)[L_0(\mathbb{Z})]$$

and either $f_[M] = 0 \in H_m(K)$ or $i(M) = 0 \in H_m(M; L_0(\mathbb{Z}))$, but in any case*

$$f_*i(M) = 0 \in H_m(K; L_0(\mathbb{Z})) .$$

(ii) *There exists a spectrum \mathcal{L}_{\bullet} whose homotopy groups fit into an exact sequence*

$$\cdots \rightarrow \Omega_m^H(\{*\}) \rightarrow \Omega_m^{TOP}(\{*\})[L_0(\mathbb{Z})] \rightarrow \pi_m(\mathcal{L}_{\bullet}) \rightarrow \Omega_{m-1}^H(\{*\}) \rightarrow \cdots ,$$

with

$$\pi_m(\mathcal{L}_{\bullet}) = \begin{cases} \mathbb{Z}[\tilde{L}_0(\mathbb{Z})] & \text{if } m = 0 \\ 0 & \text{if } m \geq 1 \text{ and } m \neq 4, 5 \end{cases}$$

and

$$\begin{aligned} \Omega_m^H(K) &\rightarrow \Omega_m^{TOP}(K)[L_0(\mathbb{Z})] \xrightarrow{\tilde{\tau}} H_m(K; \mathcal{L}_\bullet) \\ &\rightarrow H_m(K; \pi_0(\mathcal{L}_\bullet)) = H_m(K)[\widetilde{L_0(\mathbb{Z})}] ; \\ (M, f : M \rightarrow |K|) &\mapsto f_*[M][\widetilde{i(M)}] . \end{aligned}$$

(iii) For $m \geq 6$ there is defined an exact sequence

$$\dots \rightarrow \Omega_m^{H, \natural}(K) \xrightarrow{A^H} \Omega_m^H(K) \xrightarrow{\tilde{\tau}} H_m(K; \mathcal{L}_\bullet) \rightarrow \Omega_{m-1}^{H, \natural}(K) \rightarrow \dots$$

The proof of 6.6 (i) is given by Proposition 6.3. The remainder of this Chapter is devoted to the proofs of 6.6 (ii) and (iii). The spectrum \mathcal{L}_\bullet in (ii) is given by :

Definition 6.7. Let

$$\mathcal{L}_\bullet = \text{cofibre}(\Omega_\bullet^H(\{*\}) \rightarrow \Omega_\bullet^{TOP}(\{*\})[L_0(\mathbb{Z})]) ,$$

an Ω -spectrum whose homotopy groups fit into an exact sequence

$$\dots \rightarrow \Omega_m^H(\{*\}) \rightarrow \Omega_m^{TOP}(\{*\})[L_0(\mathbb{Z})] \rightarrow \pi_m(\mathcal{L}_\bullet) \rightarrow \Omega_{m-1}^H(\{*\}) \rightarrow \dots$$

It is now immediate from the identities

$$\begin{aligned} \Omega_m^H(\{*\}) &= \begin{cases} \mathbb{Z} & \text{if } m = 0 \\ 0 & \text{if } m = 1, 2 \\ \Omega_m^{TOP}(\{*\})[L_0(\mathbb{Z})] & \text{if } m \geq 6 , \end{cases} \\ \Omega_m^{TOP}(\{*\}) &= \begin{cases} \mathbb{Z} & \text{if } m = 0 \\ 0 & \text{if } m = 1, 2, 3 \end{cases} \end{aligned}$$

that

$$\pi_m(\mathcal{L}_\bullet) = \begin{cases} \mathbb{Z}[\widetilde{L_0(\mathbb{Z})}] & \text{if } m = 0 \\ 0 & \text{if } m \geq 1 \text{ and } m \neq 4, 5 \end{cases}$$

as claimed in the statement of Theorem 6.6 (ii).

The exact sequence in the statement of Theorem 6.6 (iii) is given by :

Proposition 6.8. For $m \geq 6$ there is defined an exact sequence

$$\dots \rightarrow \Omega_m^{H, \natural}(K) \xrightarrow{A^H} \Omega_m^H(K) \xrightarrow{\tilde{\tau}} H_m(K; \mathcal{L}_\bullet) \rightarrow \Omega_{m-1}^{H, \natural}(K) \rightarrow \dots$$

Proof. This is just the exact sequence

$$\begin{aligned} \dots \rightarrow H_m(K; \Omega_\bullet^H(\{*\})) &\rightarrow H_m(K; \Omega_\bullet^{TOP}(\{*\})[L_0(\mathbb{Z})]) \\ &\rightarrow H_m(K; \mathcal{L}_\bullet) \rightarrow H_{m-1}(K; \Omega_\bullet^H(\{*\})) \rightarrow \dots \end{aligned}$$

induced by the cofibration sequence of spectra

$$\Omega_\bullet^H(\{*\}) \rightarrow \Omega_\bullet^{TOP}(\{*\})[L_0(\mathbb{Z})] \rightarrow \mathcal{L}_\bullet ,$$

using 1.6, 6.1 to identify

$$\begin{aligned} \Omega_m^{H, \natural}(K) &= H_m(K; \Omega_\bullet^H(\{*\})) , \\ \Omega_m^H(K) &= H_m(K; \Omega_\bullet^{TOP}(\{*\})[L_0(\mathbb{Z})]) . \end{aligned}$$

□

This completes the proof of Theorem 6.6.

In the special case $K = S^m$ we have:

Corollary 6.9. (i) *A map $f : M^m \rightarrow S^m$ from an m -dimensional homology manifold M determines the element*

$$\tilde{\mathcal{I}}(M, f) = \text{degree}(f)[i(M)] \in \mathbb{Z}[\tilde{L}_0(\mathbb{Z})] ,$$

which vanishes if (and for $m \geq 6$ only if) f is bordant to a dual transverse map.

(ii) *For connected M $\tilde{\mathcal{I}}(M, f) = 0$ if and only if either $\text{degree}(f) = 0 \in \mathbb{Z}$ or $i(M) = 0 \in H_m(M; L_0(\mathbb{Z})) = L_0(\mathbb{Z})$.*

Proof. This follows from the sequence of 6.6 (i)

$$H_m(S^m; \Omega_\bullet^H(\{*\})) \xrightarrow{A^H} \Omega_m^H(S^m) \xrightarrow{\tilde{\mathcal{I}}} \mathbb{Z}[\tilde{L}_0(\mathbb{Z})]$$

whose composite is 0, and which is exact for $m \geq 6$. By a simple calculation

$$H_m(S^m; \Omega_\bullet^H(\{*\})) = \Omega_0^H(\{*\}) \oplus \Omega_m^H(\{*\}) .$$

Since any zero-dimensional homology manifold is a disjoint union of points

$$\Omega_0^H(\{*\}) = \Omega_0^{TOP}(\{*\}) = \mathbb{Z} .$$

By 1.6

$$\Omega_m^H(\{*\}) = \Omega_m^{TOP}(\{*\})[L_0(\mathbb{Z})] \quad (m \geq 6) ,$$

so that

$$H_m(S^m; \Omega_\bullet^H(\{*\})) = \Omega_0^{TOP}(\{*\}) \oplus \Omega_m^{TOP}(\{*\})[L_0(\mathbb{Z})] .$$

Also

$$\Omega_m^H(S^m) = \Omega_m^{TOP}(S^m)[L_0(\mathbb{Z})] \quad (m \geq 6) ,$$

and by topological transversality

$$\Omega_m^{TOP}(S^m) = H_m(S^m; \Omega_\bullet^{TOP}(\{*\})) = \Omega_0^{TOP}(\{*\}) \oplus \Omega_m^{TOP}(\{*\}) ,$$

so that

$$\Omega_m^H(S^m) = \Omega_0^{TOP}(\{*\})[L_0(\mathbb{Z})] \oplus \Omega_m^{TOP}(\{*\})[L_0(\mathbb{Z})] \quad (m \geq 6) .$$

The components of the assembly map

$$A^H = A_0^H \oplus A_m^H :$$

$$\Omega_0^H(\{*\}) \oplus \Omega_m^H(\{*\}) \rightarrow \Omega_0^{TOP}(\{*\})[L_0(\mathbb{Z})] \oplus \Omega_m^{TOP}(\{*\})[L_0(\mathbb{Z})]$$

are given by the inclusion

$$A_0^H : \Omega_0^H(\{*\}) = \mathbb{Z} \rightarrow \Omega_0^{TOP}(\{*\})[L_0(\mathbb{Z})] = \mathbb{Z}[L_0(\mathbb{Z})] ; t \mapsto t[0]$$

and the isomorphism

$$A_m^H : \Omega_m^H(\{*\}) \cong \Omega_m^{TOP}(\{*\})[L_0(\mathbb{Z})] .$$

The cokernel of A^H is thus given by the cokernel of A_0^H as $\mathbb{Z}[\tilde{L}_0(\mathbb{Z})]$. In particular, if $m \geq 6$ and Σ^m is one of the m -dimensional homology spheres with

$$i(\Sigma^m) \neq 0 \in H_m(\Sigma^m; L_0(\mathbb{Z})) = L_0(\mathbb{Z})$$

constructed in [1] there exists a homotopy equivalence $f : \Sigma^m \rightarrow S^m$ with

$$\tilde{\mathcal{I}}(\Sigma^m, f) = i(\Sigma^m) \neq 0 \in \mathbb{Z}[\tilde{L}_0(\mathbb{Z})] ,$$

so that f is not bordant to a dual transverse map. \square

Every compact *ANR* X is simple homotopy equivalent to a polyhedron $|K|$, by the result of West [20]. However, if X is an m -dimensional homology manifold then $|K|$ may not be a homology manifold.

Theorem (Levitt and Ranicki [9], Ranicki [16] (19.6))

Let X be a compact ANR which is a simple m -dimensional Poincaré space, and let $f : X \rightarrow |K|$ be a simple homotopy equivalence to a polyhedron. The map f is simple Poincaré bordant to a dual Poincaré transverse map $f' : X' \rightarrow |K|$ if (and for $m \geq 6$ only if) X is simple homotopy equivalent to a topological manifold.

Theorem 6.6 will now be used to obtain an analogous characterization of resolvable homology manifolds.

Proposition 6.10. *Let M be an m -dimensional homology manifold, and let $f : M \rightarrow |K|$ be a simple homotopy equivalence to a polyhedron. The map f is s -cobordant to a dual transverse homotopy equivalence $f' : M' \rightarrow |K|$ if (and for $m \geq 6$ only if) M is resolvable.*

Proof. If M is resolvable the mapping cylinder of a resolution $M_{TOP} \rightarrow M$ is an s -cobordism $(W; M, M_{TOP})$ with a bordism

$$(g; f, f_{TOP}) : (W; M, M_{TOP}) \rightarrow |K|$$

to a homotopy equivalence $f_{TOP} : M_{TOP} \rightarrow |K|$ which is topologically dual transverse.

Conversely, suppose that $f : M \rightarrow |K|$ is a dual transverse homotopy equivalence. Without loss of generality, it may be assumed that M is connected, so that

$$\mathcal{I}(M) = [i(M)] \in \mathbb{Z}[i(M)] \subseteq H_m(M)[L_0(\mathbb{Z})] = \mathbb{Z}[L_0(\mathbb{Z})] .$$

The composite

$$\Omega_m^H(K) \xrightarrow{\tilde{\mathcal{I}}} H_m(K; \mathcal{L}_\bullet) \rightarrow H_m(K)[\tilde{L}_0(\mathbb{Z})]$$

sends (M, f) to

$$\tilde{\mathcal{I}}(M, f) = \begin{cases} [i(M)] \in \mathbb{Z}[i(M)] \subseteq \mathbb{Z}[\tilde{L}_0(\mathbb{Z})] & \text{if } i(M) \neq 0 \\ 0 \in \mathbb{Z}[\tilde{L}_0(\mathbb{Z})] & \text{if } i(M) = 0 . \end{cases}$$

Since $f : M \rightarrow |K|$ is dual transverse, $i(M) = 0 \in L_0(\mathbb{Z})$ by 6.6 (ii). \square

7. THE MULTIPLICATIVE STRUCTURE OF HOMOLOGY MANIFOLD BORDISM

The product of an m -dimensional Poincaré space X and an n -dimensional Poincaré space Y is an $(m+n)$ -dimensional Poincaré space $X \times Y$, with Spivak normal fibration

$$\nu_{X \times Y} = \nu_X \times \nu_Y : X \times Y \rightarrow BG .$$

If X is an m -dimensional homology manifold and Y is an n -dimensional homology manifold then $X \times Y$ is an $(m+n)$ -dimensional homology manifold, with the resolution obstructions satisfying the index product formula of Quinn [12]

$$1 + 8i(X \times Y) = (1 + 8i(X))(1 + 8i(Y)) \in 1 + 8\mathbb{Z} .$$

In general, the canonical *TOP* reductions of the Spivak normal fibrations of $X, Y, X \times Y$ are such that

$$\tilde{\nu}_{X \times Y} \neq \tilde{\nu}_X \times \tilde{\nu}_Y : X \times Y \rightarrow B\text{TOP} .$$

We shall now analyze the difference

$$\tilde{\nu}_{X \times Y} - \tilde{\nu}_X \times \tilde{\nu}_Y : X \times Y \rightarrow G/TOP$$

using the multiplicative properties of the algebraic L -spectra of [16]. This analysis will be used to obtain the product structure on $\Omega_*^{TOP}(K)[L_0(\mathbb{Z})]$ which corresponds to the product structure on Ω_*^H

$$\Omega_m^H(J) \otimes \Omega_n^H(K) \rightarrow \Omega_{m+n}^H(J \times K) ; X \otimes Y \mapsto X \times Y$$

under the isomorphism of abelian groups given by 1.6

$$\Omega_*^H(K) \xrightarrow{\cong} \Omega_*^{TOP}(K)[L_0(\mathbb{Z})] ; X \mapsto X_{TOP}[i(X)] .$$

The Spivak normal fibration $\nu_X : X \rightarrow BG(k)$ (k large) of an m -dimensional Poincaré space X is equipped with a degree 1 map $\rho : S^{m+k} \rightarrow T(\nu_X)$. If ν_X is TOP reducible then for any TOP reduction $\tilde{\nu}_X : X \rightarrow BTOP$ the Browder-Novikov transversality construction gives a degree 1 normal map

$$f = \rho| : M = \rho^{-1}(X) \rightarrow X$$

with M an m -dimensional topological manifold. If $\tilde{\nu}, \tilde{\nu}' : X \rightarrow BTOP$ are two TOP reductions of ν_X the difference is classified by an element

$$t(\tilde{\nu}, \tilde{\nu}') \in H_m(X; \mathbb{L}_\bullet) = [X, G/TOP]$$

and the corresponding degree 1 normal maps $f : M \rightarrow X$, $f' : M' \rightarrow X$ can be chosen to be such that $f' = fg$ for a degree 1 normal map $g : M' \rightarrow M$ classified by an element

$$[g]_{\mathbb{L}} \in H_m(M; \mathbb{L}_\bullet) = [M, G/TOP]$$

such that $f_*[g]_{\mathbb{L}} = t(\tilde{\nu}, \tilde{\nu}')$. The surgery obstruction of g is the assembly of $[g]_{\mathbb{L}}$

$$\sigma_*(g) = A([g]_{\mathbb{L}}) \in L_m(\mathbb{Z}[\pi_1(M)])$$

and the surgery obstructions of f, f' differ by

$$\sigma_*(f') - \sigma_*(f) = A(f_*[g]_{\mathbb{L}}) = A(t(\tilde{\nu}, \tilde{\nu}')) \in L_m(\mathbb{Z}[\pi_1(X)]) .$$

See Chapter 16 of [16] for the L -theory orientation of topology.

Let \mathbb{L}^\bullet be the 0-connective symmetric ring L -spectrum of \mathbb{Z} , with homotopy groups

$$\pi_m(\mathbb{L}^\bullet) = L^m(\mathbb{Z}) = \begin{cases} \mathbb{Z} & \text{if } m \equiv 0 \pmod{4} \\ \mathbb{Z}_2 & \text{if } m \equiv 1 \pmod{4} \\ 0 & \text{if } m \equiv 2 \pmod{4} \\ 0 & \text{if } m \equiv 3 \pmod{4} . \end{cases}$$

Theorem 7.1. (Ranicki [16], 25.7)

An m -dimensional homology manifold X has a canonical \mathbb{L}^\bullet -orientation

$$[X]_{\mathbb{L}} \in H_m(X; \mathbb{L}^\bullet)$$

with assembly the symmetric signature of X

$$A([X]_{\mathbb{L}}) = \sigma^*(X) \in L^m(\mathbb{Z}[\pi_1(X)]) ,$$

and such that there are defined \mathbb{L}^\bullet -coefficient Poincaré duality isomorphisms

$$[X]_{\mathbb{L}} \cap - : H^*(X; \mathbb{L}^\bullet) \cong H_{m-*}(X; \mathbb{L}^\bullet) ,$$

as well as with coefficients in any \mathbb{L}^\bullet -module spectrum (e.g. $\mathbb{L}_\bullet, \overline{\mathbb{L}}_\bullet$).

Proof. See [16] (16.16) for the canonical \mathbb{L}^\bullet -orientation of an m -dimensional topological manifold. Let $f : M = X_{TOP} \rightarrow X$ be the normal map from a topological manifold determined (up to normal bordism) by the canonical TOP reduction $\tilde{\nu}_X$ of ν_X , with surgery obstruction

$$\sigma_*(f) = \overline{A}([f]_{\mathbb{L}}) = \overline{A}(-i(X)) \in L_m(\mathbb{Z}[\pi_1(X)])$$

the assembly of

$$[f]_{\mathbb{L}} = (-i(X), 0) \in H_m(X; \overline{\mathbb{L}}_\bullet) = H_m(X; L_0(\mathbb{Z})) \oplus H_m(X; \mathbb{L}_\bullet) .$$

The canonical \mathbb{L}^\bullet -theory orientation of X is given by

$$\begin{aligned} [X]_{\mathbb{L}} &= f_*[M]_{\mathbb{L}} - (1 + T)[f]_{\mathbb{L}} = f_*[M]_{\mathbb{L}} + (8i(X), 0) \\ &\in H_m(X; \mathbb{L}^\bullet) = H_m(X; L^0(\mathbb{Z})) \oplus H_m(X; \mathbb{L}^\bullet\langle 1 \rangle) . \end{aligned}$$

□

Let $\mathbb{L}^\bullet\langle 1 \rangle$ be the 1-connective cover of \mathbb{L}^\bullet , so that for any space X there is defined an exact sequence

$$\cdots \rightarrow H_m(X; \mathbb{L}^\bullet\langle 1 \rangle) \rightarrow H_m(X; \mathbb{L}^\bullet) \rightarrow H_m(X; L^0(\mathbb{Z})) \rightarrow H_{m-1}(X; \mathbb{L}^\bullet\langle 1 \rangle) \rightarrow \cdots$$

The 0th spaces of \mathbb{L}^\bullet and $\mathbb{L}^\bullet\langle 1 \rangle$ are related by

$$\mathbb{L}^0 = L^0(\mathbb{Z}) \times \mathbb{L}^0\langle 1 \rangle ,$$

so that for an m -dimensional homology manifold X

$$\begin{aligned} H_m(X; \mathbb{L}^\bullet) &\cong H^0(X; \mathbb{L}^\bullet) \\ &\cong [X, \mathbb{L}^0] \cong [X, L^0(\mathbb{Z}) \times \mathbb{L}^0\langle 1 \rangle] \\ &\cong H^0(X; L^0(\mathbb{Z})) \oplus H^0(X; \mathbb{L}^\bullet\langle 1 \rangle) \\ &\cong H_m(X; L^0(\mathbb{Z})) \oplus H_m(X; \mathbb{L}^\bullet\langle 1 \rangle) . \end{aligned}$$

For a connected X

$$[X]_{\mathbb{L}} = (1 + 8i(X), [\widetilde{X}]_{\mathbb{L}}) \in H_m(X; \mathbb{L}^\bullet) = H_m(X; L^0(\mathbb{Z})) \oplus H_m(X; \mathbb{L}^\bullet\langle 1 \rangle) ,$$

writing the ordinary fundamental class as $[X] = 1 \in H_m(X; L^0(\mathbb{Z})) = \mathbb{Z}$.

Corollary 7.2. *Given an m -dimensional homology manifold X let $f : M = X_{TOP} \rightarrow X$ be a normal map from a topological manifold in the canonical class. The canonical \mathbb{L}^\bullet -orientation of M is such that*

$$[M]_{\mathbb{L}} = (1, [\widetilde{M}]_{\mathbb{L}}) \in H_m(M; \mathbb{L}^\bullet) = H_m(M; L^0(\mathbb{Z})) \oplus H_m(M; \mathbb{L}^\bullet\langle 1 \rangle)$$

with

$$\begin{aligned} f_*[M]_{\mathbb{L}} &= -8i(X) + [X]_{\mathbb{L}} \in H_m(X; \mathbb{L}^\bullet) , \\ f_*[\widetilde{M}]_{\mathbb{L}} &= [\widetilde{X}]_{\mathbb{L}} \in H_m(X; \mathbb{L}^\bullet\langle 1 \rangle) . \end{aligned}$$

Definition 7.3. Let X be an m -dimensional homology manifold, and let $\tilde{\nu}_X : X \rightarrow BTOP$ be the canonical Ferry-Pedersen [4] TOP reduction of the Spivak normal fibration $\nu_X : X \rightarrow BG$, with stable inverse $-\tilde{\nu}_X : X \rightarrow BTOP$.

(i) The (rational) *Pontrjagin classes* of X are the Pontrjagin classes of $-\tilde{\nu}_X$

$$p_k(X) = p_k(-\tilde{\nu}_X) \in H^{4k}(X; \mathbb{Q}) \quad (k \geq 0) .$$

(ii) The \mathcal{L} -genus of X is the \mathcal{L} -genus of $-\tilde{\nu}_X$

$$\mathcal{L}(X) = \mathcal{L}(-\tilde{\nu}_X) \in H^{4*}(X; \mathbb{Q}) .$$

(iii) The \mathcal{L}^H -genus of X is

$$\mathcal{L}^H(X) = 8i(X) + \mathcal{L}(X) \in H^{4*}(X; \mathbb{Q}) ,$$

with components

$$\mathcal{L}_k^H(X) = \begin{cases} 1 + 8i(X) \in H^0(X; \mathbb{Q}) & \text{if } k = 0 \\ \mathcal{L}_k(X) \in H^{4k}(X; \mathbb{Q}) & \text{if } k \geq 1 . \end{cases}$$

The \mathcal{L} -genus has the same expression in terms of the Pontrjagin classes of a homology manifold X as for a topological manifold, with components

$$\begin{aligned} \mathcal{L}_0(X) &= p_0(X) = 1 \in H^0(X; \mathbb{Q}) , \\ \mathcal{L}_1(X) &= \frac{1}{3}p_1(X) \in H^4(X; \mathbb{Q}) , \\ \mathcal{L}_2(X) &= \frac{1}{45}(7p_2(X) - p_1(X)^2) \in H^8(X; \mathbb{Q}) , \text{ etc.} \end{aligned}$$

The Hirzebruch signature theorem also applies to homology manifolds:

Corollary 7.4. (i) *If X is an m -dimensional homology manifold and $f : M = X_{TOP} \rightarrow X$ is the canonical normal map then*

$$\mathcal{L}(M) = f^*\mathcal{L}(X) \in H^{4*}(M; \mathbb{Q}) .$$

(ii) *The canonical \mathbb{L}^\bullet -orientation of an m -dimensional homology manifold X is given rationally by (the Poincaré dual of) the \mathcal{L}^H -genus*

$$[X]_{\mathbb{L}} \otimes 1 = \mathcal{L}^H(X) \in H_m(X; \mathbb{L}^\bullet) \otimes \mathbb{Q} = H_{m-4*}(X; \mathbb{Q}) = H^{4*}(X; \mathbb{Q}) .$$

(iii) *The signature of a $4k$ -dimensional homology manifold X is given by*

$$\sigma^*(X) = \langle \mathcal{L}_k(X), [X] \rangle \in L^{4k}(\mathbb{Z}) = \mathbb{Z} .$$

Proof. (i) Immediate from $f^*(-\tilde{\nu}_X) = \tau_M$ (stably).

(ii) The canonical \mathbb{L}^\bullet -orientation of a topological manifold M is given rationally by the ordinary \mathcal{L} -genus

$$[M]_{\mathbb{L}} \otimes 1 = \mathcal{L}(M) \in H_m(M; \mathbb{L}^\bullet) \otimes \mathbb{Q} = H_{m-4*}(M; \mathbb{Q}) = H^{4*}(M; \mathbb{Q}) ,$$

with $\mathcal{L}^H(M) = \mathcal{L}(M)$, $i(M) = 0$. If $f : M = X_{TOP} \rightarrow X$ is the canonical normal map

$$\begin{aligned} [X]_{\mathbb{L}} \otimes 1 &= f_*[M]_{\mathbb{L}} \otimes 1 + 8i(X) \\ &= f_*\mathcal{L}(M) + 8i(X) = \mathcal{L}(X) + 8i(X) = \mathcal{L}^H(X) \in H^{4*}(M; \mathbb{Q}) . \end{aligned}$$

(iii) Immediate from (ii), the identity $\sigma^*(X) = A([X]_{\mathbb{L}})$ of Theorem 7.1, and the fact that the simply-connected assembly map

$$\begin{aligned} A : H_{4k}(X; \mathbb{L}^\bullet) &= H_{4k}(X; L^0(\mathbb{Z})) \oplus H_{4k}(X; \mathbb{L}^\bullet \langle 1 \rangle) \\ &\xrightarrow{(0 \ p_*)} H_{4k}(\{*\}; \mathbb{L}^\bullet \langle 1 \rangle) = L^{4k}(\mathbb{Z}) \end{aligned}$$

sends $8i(X) \in H_{4k}(X; L^0(\mathbb{Z}))$ to 0, with $p : X \rightarrow \{*\}$ the unique map. \square

Corollary 7.5. *Let $X = M_i$ be the m -dimensional homology manifold with prescribed resolution obstruction $i(X) = i$ given by the construction of 1.5 applied to an m -dimensional topological manifold M ($m \geq 6$), with normal map $f : X \rightarrow M$.*

(i) *The canonical \mathbb{L}^\bullet -orientation $[X]_{\mathbb{L}} \in H_m(X; \mathbb{L}^\bullet)$ is such that*

$$f_*[X]_{\mathbb{L}} = 8i + [M]_{\mathbb{L}} \in H_m(M; \mathbb{L}^\bullet) .$$

(ii) *The \mathcal{L}^H -genus $\mathcal{L}^H(X) \in H^{4*}(X; \mathbb{Q}) = H_{m-4*}(X; \mathbb{Q})$ is such that*

$$f_*\mathcal{L}^H(X) = 8i + \mathcal{L}(M) \in H^{4*}(M; \mathbb{Q})$$

Proof. (i) For any normal map $F : X \rightarrow Y$ of m -dimensional homology manifolds

$$F_*[X]_{\mathbb{L}} = (1 + T)[F]_{\mathbb{L}} + [Y]_{\mathbb{L}} \in H_m(Y; \mathbb{L}^\bullet) .$$

For $F = f : X \rightarrow Y = M$

$$[F]_{\mathbb{L}} = i \in H_m(M; \overline{\mathbb{L}}_\bullet)$$

and $(1 + T)[F]_{\mathbb{L}} = 8i$.

(ii) Immediate from (i) and 7.4. □

We shall now analyze the difference

$$\tilde{\nu}_{X \times Y} - \tilde{\nu}_X \times \tilde{\nu}_Y : X \times Y \rightarrow G/TOP$$

for homology manifolds X, Y using the canonical \mathbb{L}^\bullet -orientation of homology manifolds and the surgery composition and product formulae:

(i) (Ranicki [14] (4.3)) The composite of normal maps $f : X \rightarrow Y$, $g : Y \rightarrow Z$ of n -dimensional Poincaré spaces is a normal map $gf : X \rightarrow Z$ with surgery obstruction

$$\sigma_*(gf) = \sigma_*(f) \oplus \sigma_*(g) \in L_n(\mathbb{Z}[\pi_1(Z)]) .$$

(ii) ([14] (8.1)) The product of a normal map $f : M \rightarrow X$ of m -dimensional Poincaré spaces and a normal map $g : N \rightarrow Y$ of n -dimensional Poincaré spaces is a normal map $f \times g : M \times N \rightarrow X \times Y$ of $(m + n)$ -dimensional geometric Poincaré spaces with surgery obstruction

$$\begin{aligned} \sigma_*(f \times g) &= \sigma_*(f) \otimes \sigma_*(g) + \sigma^*(X) \otimes \sigma_*(g) + \sigma_*(f) \otimes \sigma^*(Y) \\ &= \sigma^*(M) \otimes \sigma_*(g) + \sigma_*(f) \otimes \sigma^*(Y) \in L_{m+n}(\mathbb{Z}[\pi_1(X \times Y)]) . \end{aligned}$$

The formulae are proved on the chain level, using the Eilenberg-Zilber theorem.

Theorem 7.6. *Let X be an m -dimensional homology manifold, and let Y be an n -dimensional homology manifold.*

(i) *The product $(m + n)$ -dimensional homology manifold $X \times Y$ has canonical \mathbb{L}^\bullet -orientation the product of the canonical \mathbb{L}^\bullet -orientations of X and Y*

$$[X \times Y]_{\mathbb{L}} = [X]_{\mathbb{L}} \otimes [Y]_{\mathbb{L}} \in H_{m+n}(X \times Y; \mathbb{L}^\bullet) .$$

(ii) *Let $f : X_{TOP} \rightarrow X$, $g : Y_{TOP} \rightarrow Y$ be normal maps from topological manifolds in the normal bordism classes determined by the canonical TOP reductions $\tilde{\nu}_X, \tilde{\nu}_Y$ of ν_X, ν_Y , and let*

$$h : (X \times Y)_{TOP} \rightarrow X_{TOP} \times Y_{TOP}$$

be the normal map of topological manifolds classified by

$$\begin{aligned} [h]_{\mathbb{L}} &= i(X) \otimes \widetilde{[Y_{TOP}]_{\mathbb{L}}} + \widetilde{[X_{TOP}]_{\mathbb{L}}} \otimes i(Y) \\ &\in H_{m+n}(X_{TOP} \times Y_{TOP}; \mathbb{L}_\bullet) = [X_{TOP} \times Y_{TOP}, G/TOP] . \end{aligned}$$

The composite normal map

$$(X \times Y)_{TOP} \xrightarrow{h} X_{TOP} \times Y_{TOP} \xrightarrow{f \times g} X \times Y$$

is in the normal bordism class determined by the canonical TOP reduction $\tilde{\nu}_{X \times Y}$ of $\nu_{X \times Y}$.

(iii) The canonical TOP reduction

$$\tilde{\nu}_{X \times Y} : X \times Y \rightarrow BTOP$$

of the Spivak normal fibration of $X \times Y$

$$\nu_{X \times Y} = \nu_X \times \nu_Y : X \times Y \rightarrow BG$$

differs from the product TOP reduction

$$\tilde{\nu}_X \times \tilde{\nu}_Y : X \times Y \rightarrow BTOP$$

by the element

$$\begin{aligned} t(\tilde{\nu}_{X \times Y}, \tilde{\nu}_X \times \tilde{\nu}_Y) &= i(X) \otimes [\widetilde{Y}]_{\mathbb{L}} + [\widetilde{X}]_{\mathbb{L}} \otimes i(Y) \\ &\in H_{m+n}(X \times Y; \mathbb{L}_{\bullet}) = [X \times Y, G/TOP] . \end{aligned}$$

Proof. (i) This is just the Eilenberg-Zilber theorem on the level of symmetric Poincaré cycles.

(ii) By construction, f and g are classified by

$$[f]_{\mathbb{L}} = -i(X) \in H_m(X; \overline{\mathbb{L}}_{\bullet}) , \quad [g]_{\mathbb{L}} = -i(Y) \in H_n(Y; \overline{\mathbb{L}}_{\bullet}) .$$

By the surgery product formula (on the level of quadratic Poincaré cycles) the product normal map $f \times g : X_{TOP} \times Y_{TOP} \rightarrow X \times Y$ is classified by

$$\begin{aligned} [f \times g]_{\mathbb{L}} &= [X]_{\mathbb{L}} \otimes [g]_{\mathbb{L}} + [f]_{\mathbb{L}} \otimes g_*[Y_{TOP}]_{\mathbb{L}} \\ &= -[X]_{\mathbb{L}} \otimes i(Y) - i(X) \otimes (1 + [\widetilde{Y}]_{\mathbb{L}}) \in H_{m+n}(X \times Y; \overline{\mathbb{L}}_{\bullet}) . \end{aligned}$$

By the surgery composition formula (on the level of quadratic Poincaré cycles)

$$\begin{aligned} [(f \times g)h]_{\mathbb{L}} &= (f \times g)_*[h]_{\mathbb{L}} + [f \times g]_{\mathbb{L}} \\ &= i(X) \otimes [\widetilde{Y}]_{\mathbb{L}} + [\widetilde{X}]_{\mathbb{L}} \otimes i(Y) \\ &\quad - [X]_{\mathbb{L}} \otimes i(Y) - i(X) \otimes g_*[Y_{TOP}]_{\mathbb{L}} \\ &= -i(X) * i(Y) = -i(X \times Y) \\ &\in H_{m+n}(X \times Y; L_0(\mathbb{Z})) \subseteq H_{m+n}(X \times Y; \overline{\mathbb{L}}_{\bullet}) , \end{aligned}$$

so that $(f \times g)h$ is in the canonical normal bordism class.

(iii) Immediate from (ii), noting that

$$\begin{aligned} [h]_{\mathbb{L}} &= (t(\tilde{\nu}_{X \times Y}, \tilde{\nu}_X \times \tilde{\nu}_Y), 0) \\ &\in H_{m+n}(X_{TOP} \times Y_{TOP}; \mathbb{L}_{\bullet}) = H_{m+n}(X \times Y; \mathbb{L}_{\bullet}) \oplus K_{m+n} \end{aligned}$$

with K_{m+n} the $(m+n)$ -dimensional homology kernel of $f \times g$. \square

Definition 7.7. For any integers $i, j \in \mathbb{Z}$ let

$$i * j = i + j + 8ij \in \mathbb{Z} ,$$

so that

$$(1 + 8i)(1 + 8j) = 1 + 8i * j \in \mathbb{Z} .$$

Corollary 7.8. *Let X, Y be homology manifolds.*

(i) *The \mathcal{L}^H -genus of $X \times Y$ is*

$$\mathcal{L}^H(X \times Y) = \mathcal{L}^H(X) \otimes \mathcal{L}^H(Y) \in H^{4*}(X \times Y; \mathbb{Q}) ,$$

with

$$\begin{aligned} \mathcal{L}_k^H(X \times Y) &= \sum_{i+j=k} (\mathcal{L}_i(X) \otimes \mathcal{L}_j(Y)) + \mathcal{L}_k(X) \otimes 8i(Y) + 8i(X) \otimes \mathcal{L}_k(Y) \\ &\in H^{4k}(X \times Y; \mathbb{Q}) \quad (k \geq 1) . \end{aligned}$$

(ii) (Quinn [12]) *The resolution obstruction of $X \times Y$ is*

$$i(X \times Y) = i(X) * i(Y) \in \mathbb{Z} .$$

Proof. (i) This is just the rationalization of the product formula of Theorem 7.6 (i).

(ii) This is just the 0-dimensional component of the identity of (i). \square

As is well-known, the \mathcal{L} -genus determines the Pontrjagin classes, so the formula in Corollary 7.8 can be used to determine the Pontrjagin classes of a product homology manifold $X \times Y$

$$p_k(X \times Y) \in H^{4k}(X \times Y; \mathbb{Q}) \quad (k \geq 1)$$

in terms of the Pontrjagin classes $p_*(X)$, $p_*(Y)$ and the resolution obstructions $i(X)$, $i(Y)$.

Example 7.9. If X, Y are 4-dimensional homology manifolds, then the Pontrjagin classes of the product 8-dimensional homology manifold $X \times Y$ are given by

$$\begin{aligned} p_1(X \times Y) &= p_1(X) \otimes (1 + 8i(Y)) + (1 + 8i(X)) \otimes p_1(Y) \in H^4(X \times Y; \mathbb{Q}) , \\ p_2(X \times Y) &= (1 + \frac{16}{7}i(X) * i(Y))p_1(X) \otimes p_1(Y) \in H^8(X \times Y; \mathbb{Q}) . \end{aligned}$$

\square

Corollary 7.10. *The homology manifold bordism product for $m \geq 6, n \geq 6$*

$$\Omega_m^H(J) \otimes \Omega_n^H(K) \rightarrow \Omega_{m+n}^H(J \times K) ; \quad X \otimes Y \mapsto X \times Y$$

corresponds under the isomorphisms of 1.6 to the topological manifold bordism product

$$\begin{aligned} \Omega_m^{TOP}(J)[L_0(\mathbb{Z})] \otimes \Omega_n^{TOP}(K)[L_0(\mathbb{Z})] &\rightarrow \Omega_{m+n}^{TOP}(J \times K)[L_0(\mathbb{Z})] ; \\ M[i] \otimes N[j] &\mapsto (M_i \times N_j)_{TOP}[i * j] . \end{aligned}$$

Here, $i = I(X)$, $j = I(Y)$, and $M = X_{TOP} \rightarrow X$, $N = Y_{TOP} \rightarrow Y$ are the normal maps from topological manifolds determined by the canonical TOP reductions of ν_X , ν_Y , and $M_i \rightarrow M$, $N_j \rightarrow N$ are the normal maps from homology manifolds with resolution obstructions $I(M_i) = i$, $I(N_j) = j$ given by Proposition 1.5. The normal map $h : (X \times Y)_{TOP} \rightarrow M \times N$ of Theorem 7.6 (ii) classified by

$$[h]_{\mathbb{L}} = i \otimes [\widetilde{N}]_{\mathbb{L}} + [\widetilde{M}]_{\mathbb{L}} \otimes j \in H_{m+n}(M \times N; \mathbb{L}_{\bullet})$$

is bordant to the composite normal map

$$F : (M_i \times N_j)_{TOP} \rightarrow M_i \times N_j \rightarrow M \times N .$$

Proof The normal maps $M_i \rightarrow M$, $N_j \rightarrow N$ are classified by

$$[M_i \rightarrow M]_{\mathbb{L}} = i \in H_m(M; \overline{\mathbb{L}}_{\bullet}) , [N_j \rightarrow N]_{\mathbb{L}} = j \in H_n(N; \overline{\mathbb{L}}_{\bullet}) .$$

Apply the surgery composition and product formulae to compute the classifying invariant of the composite $(M_i \times N_j)_{TOP} \rightarrow M_i \times N_j \rightarrow M \times N$

$$\begin{aligned} & [(M_i \times N_j)_{TOP} \rightarrow M \times N]_{\mathbb{L}} \\ &= [(M_i \times N_j)_{TOP} \rightarrow M_i \times N_j] + [M_i \times N_j \rightarrow M \times N] \\ &= -i * j + 8ij + i \otimes [N]_{\mathbb{L}} + [M]_{\mathbb{L}} \otimes j \\ &= i \otimes [\widetilde{N}]_{\mathbb{L}} + [\widetilde{M}]_{\mathbb{L}} \otimes j \in H_{m+n}(M \times N; \mathbb{L}_{\bullet}) \subseteq H_{m+n}(M \times N; \overline{\mathbb{L}}_{\bullet}) , \end{aligned}$$

so that $(M_i \times N_j)_{TOP} \rightarrow M \times N$, $(X \times Y)_{TOP} \rightarrow M \times N$ are normal bordant. \square

Remark 7.11. Given an m -dimensional topological manifold M , an n -dimensional topological manifold N , and $i, j \in \mathbb{Z}$ let

$$P = (M_i \times N_j)_{TOP}$$

be the $(m+n)$ -dimensional topological manifold appearing in Corollary 7.10, and let $F : P \rightarrow M \times N$ be the degree 1 normal map. The \mathcal{L} -genus of P has components

$$\mathcal{L}_k(P) = F^*((\mathcal{L}(M) \otimes \mathcal{L}(N))_k + 8i \otimes \mathcal{L}_k(N) + \mathcal{L}_k(M) \otimes 8j) \in H^{4k}(P; \mathbb{Q}) \ (k \geq 1) .$$

\square

Example 7.12. Take $m = n = 4$, $J = K = \{\text{pt.}\}$ in 7.10. The signature defines an isomorphism

$$\omega_4 : \Omega_4^{TOP} \rightarrow \mathbb{Z} ; M \mapsto \frac{1}{3} \langle p_1(M), [M] \rangle = \sigma^*(M)$$

such that

$$\omega_4(\mathbb{C} \mathbb{P}^2) = 1 .$$

Linear combinations of Pontrjagin numbers define an isomorphism

$$\begin{aligned} \omega_8 : \Omega_8^{TOP} \otimes \mathbb{Q} &\rightarrow \mathbb{Q} \oplus \mathbb{Q} ; \\ P &\mapsto (\frac{1}{9} \langle 5p_2(P) - 2p_1(P)^2, [P] \rangle, \frac{1}{5} \langle -2p_2(P) + p_1(P)^2, [P] \rangle) \end{aligned}$$

such that

$$\omega_8(\mathbb{C} \mathbb{P}^2 \times \mathbb{C} \mathbb{P}^2) = (1, 0) , \omega_8(\mathbb{C} \mathbb{P}^4) = (0, 1) ,$$

with the signature given by

$$\begin{aligned} \sigma^* : \Omega_8^{TOP} \otimes \mathbb{Q} &\xrightarrow{\omega_8} \mathbb{Q} \oplus \mathbb{Q} \xrightarrow{(1 \ 1)} L^8(\mathbb{Z}) \otimes \mathbb{Q} = \mathbb{Q} ; \\ P &\mapsto \sigma^*(P) = \frac{1}{9} \langle 5p_2(P) - 2p_1(P)^2, [P] \rangle + \frac{1}{5} \langle -2p_2(P) + p_1(P)^2, [P] \rangle \\ &= \frac{1}{45} \langle 7p_2(P) - p_1(P)^2, [P] \rangle . \end{aligned}$$

If M, N are 4-dimensional topological manifolds then

$$\omega_8(M \times N) = (\sigma^*(M)\sigma^*(N), 0)$$

and if $P = (M_i \times N_j)_{TOP}$ for some $i, j \in \mathbb{Z}$ then

$$\begin{aligned}\langle p_1(P)^2, [P] \rangle &= 2(1 + 8i * j) \langle p_1(M), [M] \rangle \langle p_1(N), [N] \rangle, \\ \langle p_2(P), [P] \rangle &= (1 + \frac{16}{7}i * j) \langle p_1(M), [M] \rangle \langle p_1(N), [N] \rangle, \\ \omega_8(P) &= ((1 - \frac{144}{7}i * j)\sigma^*(M)\sigma^*(N), (\frac{144}{7}i * j)\sigma^*(M)\sigma^*(N)).\end{aligned}$$

□

The product structure on homology manifold bordism

$$\Omega_m^H \otimes \Omega_n^H \rightarrow \Omega_{m+n}^H; X \otimes Y \mapsto X \times Y$$

therefore does not correspond to the product structure

$$\Omega_m^{TOP}[L_0(\mathbb{Z})] \otimes \Omega_n^{TOP}[L_0(\mathbb{Z})] \rightarrow \Omega_{m+n}^{TOP}[L_0(\mathbb{Z})]; M[i] \otimes N[j] \mapsto (M \times N)[i * j]$$

under the abelian group isomorphism of 1.6

$$\Omega_*^H \cong \Omega_*^{TOP}[L_0(\mathbb{Z})].$$

However, as stated in Weinberger [19], for $m \geq 6$ there is an isomorphism of rings

$$\phi : \Omega_*^H \otimes \mathbb{Q} \cong (\Omega_*^{TOP} \otimes \mathbb{Q})[L_0(\mathbb{Z})].$$

We shall now give an explicit description of the isomorphism ϕ , which is *different* from the isomorphism $\Omega_m^H \cong \Omega_m^{TOP}[L_0(\mathbb{Z})]$ given by 1.6.

Recall that the rational cobordism groups

$$\Omega_*^{TOP} \otimes \mathbb{Q} = \Omega_*^O \otimes \mathbb{Q}$$

are detected by Pontrjagin numbers in dimensions $* \equiv 0 \pmod{4}$, and are 0 in dimensions $* \not\equiv 0 \pmod{4}$. The Pontrjagin numbers of an m -dimensional topological manifold M with $m \equiv 0 \pmod{4}$ are rational linear combinations of the characteristic \mathcal{L} -numbers

$$\mathcal{L}_I(M) = \langle \mathcal{L}_{i_1}(M) \mathcal{L}_{i_2}(M) \cdots \mathcal{L}_{i_k}(M), [M] \rangle \in \mathbb{Q},$$

one for each k -tuple $I = (i_1, i_2, \dots, i_k)$ of integers ≥ 1 with $4(i_1 + i_2 + \cdots + i_k) = m$. Conversely, the characteristic \mathcal{L} -numbers of M are rational linear combinations of the Pontrjagin numbers. Thus the characteristic \mathcal{L} -numbers also determine the rational cobordism class, with isomorphisms

$$\Omega_m^{TOP} \otimes \mathbb{Q} \rightarrow \sum_I \mathbb{Q}; M \mapsto \sum_I \mathcal{L}_I(M).$$

Definition 7.13. (i) The \mathcal{L}' -genus of an m -dimensional homology manifold X is

$$\mathcal{L}'(X) = \frac{1}{1 + 8i(X)} \mathcal{L}^H(X) \in H^{4*}(X; \mathbb{Q}),$$

with components

$$\mathcal{L}'_k(X) = \begin{cases} 1 \in H^0(X; \mathbb{Q}) & \text{if } k = 0 \\ \frac{1}{1 + 8i(X)} \mathcal{L}_k(X) \in H^{4k}(X; \mathbb{Q}) & \text{if } k \geq 1. \end{cases}$$

(ii) The \mathcal{L}' -characteristic numbers of an m -dimensional homology manifold X are

$$\begin{aligned}\mathcal{L}'_I(X) &= \langle \mathcal{L}'_{i_1}(X) \mathcal{L}'_{i_2}(X) \cdots \mathcal{L}'_{i_k}(X), [X] \rangle \in \mathbb{Q} \\ (I = (i_1, i_2, \dots, i_k), m = 4(i_1 + i_2 + \cdots + i_k))\end{aligned}$$

with $\mathcal{L}'_I(X) = 0$ if $m \not\equiv 0 \pmod{4}$.

(iii) Define a function

$$\phi : \Omega_m^H \otimes \mathbb{Q} \rightarrow (\Omega_m^{TOP} \otimes \mathbb{Q})[L_0(\mathbb{Z})] ; X \mapsto (M \otimes a)[i(X)]$$

using any m -dimensional topological manifold M and $a \in \mathbb{Q}$ such that

$$\mathcal{L}'_I(X) = \mathcal{L}_I(M) \otimes a \in \mathbb{Q}$$

for every $I = (i_1, i_2, \dots, i_k)$ with $4(i_1 + i_2 + \dots + i_k) = m$.

The morphism of 1.6

$$\psi : \Omega_m^H \rightarrow \Omega_m^{TOP}[L_0(\mathbb{Z})] ; X \mapsto X_{TOP}[i(X)]$$

(which is an isomorphism for $m \geq 6$) is such that the composite

$$\Omega_m^H \otimes \mathbb{Q} \xrightarrow{\psi} (\Omega_m^{TOP} \otimes \mathbb{Q})[L_0(\mathbb{Z})] \cong \left(\sum_I \mathbb{Q} \right)[L_0(\mathbb{Z})]$$

sends an m -dimensional homology manifold X to

$$\left(\sum_I \mathcal{L}_I(X) \right)[i(X)] \in \left(\sum_I \mathbb{Q} \right)[L_0(\mathbb{Z})] .$$

The composite

$$\Omega_m^H \otimes \mathbb{Q} \xrightarrow{\phi} (\Omega_m^{TOP} \otimes \mathbb{Q})[L_0(\mathbb{Z})] \cong \left(\sum_I \mathbb{Q} \right)[L_0(\mathbb{Z})]$$

sends an m -dimensional homology manifold X to

$$\left(\sum_I \mathcal{L}_I(M) \otimes a \right)[i(X)] = \left(\sum_I \mathcal{L}'_I(X) \right)[i(X)] \in \left(\sum_I \mathbb{Q} \right)[L_0(\mathbb{Z})] ,$$

so that $\phi \neq \psi$. The inverse of ψ for $m \geq 6$ is given by

$$\psi^{-1} : \Omega_m^{TOP}[L_0(\mathbb{Z})] \rightarrow \Omega_m^H ; N[i] \mapsto N_i$$

with N_i the homology manifold with resolution obstruction i obtained by the construction of 1.5. The composite

$$(\Omega_m^{TOP} \otimes \mathbb{Q})[L_0(\mathbb{Z})] \xrightarrow{\psi^{-1}} \Omega_m^H \otimes \mathbb{Q} \xrightarrow{\phi} (\Omega_m^{TOP} \otimes \mathbb{Q})[L_0(\mathbb{Z})] \cong \left(\sum_I \mathbb{Q} \right)[L_0(\mathbb{Z})]$$

is given by

$$N[i] \mapsto \left(\sum_I \left(\frac{1}{1+8i} \right)^k \mathcal{L}_I(N_i) \right)[i] = \left(\sum_I \left(\frac{1}{1+8i} \right)^k \mathcal{L}_I(N) \right)[i]$$

with $I = (i_1, i_2, \dots, i_k)$, $m = 4(i_1 + i_2 + \dots + i_k)$.

Proposition 7.14. (i) *The function $\phi : \Omega_m^H \otimes \mathbb{Q} \rightarrow (\Omega_m^{TOP} \otimes \mathbb{Q})[L_0(\mathbb{Z})]$ is a ring morphism which is an isomorphism for $m \geq 6$.*

(ii) *The rational homology manifold bordism product*

$$(\Omega_m^H \otimes \mathbb{Q}) \otimes (\Omega_n^H \otimes \mathbb{Q}) \rightarrow \Omega_{m+n}^H \otimes \mathbb{Q} ; (X \otimes Y) \mapsto (X \times Y)$$

corresponds under ϕ to the rational topological manifold bordism product

$$(\Omega_m^{TOP} \otimes \mathbb{Q})[L_0(\mathbb{Z})] \otimes (\Omega_n^{TOP} \otimes \mathbb{Q})[L_0(\mathbb{Z})] \rightarrow (\Omega_{m+n}^{TOP} \otimes \mathbb{Q})[L_0(\mathbb{Z})] ;$$

$$(M \otimes a)[i] \otimes (N \otimes b)[j] \mapsto ((M \times N) \otimes ab)[i * j] .$$

Here $i = i(X)$, $j = i(Y)$, and $M \otimes a = \phi(X)$, $N \otimes b = \phi(Y)$.

Proof. We know from 1.6 that the morphism of abelian groups

$$\psi : \Omega_m^H \otimes \mathbb{Q} \rightarrow (\Omega_m^{TOP} \otimes \mathbb{Q})[L_0(\mathbb{Z})] \cong \left(\sum_I \mathbb{Q} \right)[L_0(\mathbb{Z})] ; X \mapsto \left(\sum_I \mathcal{L}_I(X) \right)[i(X)]$$

is an isomorphism for $m \geq 6$. It follows that the morphism of abelian groups

$$\phi : \Omega_m^H \otimes \mathbb{Q} \rightarrow (\Omega_m^{TOP} \otimes \mathbb{Q})[L_0(\mathbb{Z})] \cong \left(\sum_I \mathbb{Q} \right)[L_0(\mathbb{Z})] ; X \mapsto \left(\sum_I \mathcal{L}'_I(X) \right)[i(X)]$$

is also an isomorphism for $m \geq 6$. It remains to show that ϕ preserves the multiplicative structures. By 7.8 (ii)

$$\phi(X \times Y) = (P \otimes c)[i * j]$$

for some element $P \otimes c \in \Omega_{m+n}^{TOP} \otimes \mathbb{Q}$. We need to show that

$$P \otimes c = (M \times N) \otimes ab \in \Omega_{m+n}^{TOP} \otimes \mathbb{Q} .$$

From the above we see that $M \otimes a$ and $N \otimes b$ correspond to the \mathcal{L} -numbers

$$\mathcal{L}_I(M \otimes a) = \mathcal{L}'_I(X) \text{ and } \mathcal{L}_I(N \otimes b) = \mathcal{L}'_I(Y) \in \mathbb{Q} \text{ respectively.}$$

We compare these \mathcal{L} -numbers with those of $P \otimes c$, which are given by

$$\mathcal{L}_I(P \otimes c) = \mathcal{L}'_I(X \times Y) \in \mathbb{Q} .$$

We observe that by 7.8 (i)

$$\begin{aligned} \mathcal{L}'(X \times Y) &= \frac{1}{1 + 8i * j} \mathcal{L}^H(X \times Y) \\ &= \frac{1}{1 + 8i * j} \mathcal{L}^H(X) \otimes \mathcal{L}^H(Y) \\ &= \mathcal{L}'(X) \otimes \mathcal{L}'(Y) \in H^{4*}(X \times Y; \mathbb{Q}) , \end{aligned}$$

and that the \mathcal{L} -numbers satisfy the following product formula

$$\mathcal{L}_I((M \times N) \otimes ab) = \sum_{J,K} \mathcal{L}_J(M \otimes a) \mathcal{L}_K(N \otimes b) \in \mathbb{Q} ,$$

with $I = (i_1, i_2, \dots, i_l)$, and $J = (j_1, j_2, \dots, j_l)$, $K = (k_1, k_2, \dots, k_l)$ such that

$$j_1 + k_1 = i_1 , j_2 + k_2 = i_2 , \dots , j_l + k_l = i_l .$$

Conversely

$$\begin{aligned} \sum_{J,K} \mathcal{L}_J(M \otimes a) \mathcal{L}_K(N \otimes b) &= \sum_{J,K} \mathcal{L}'_J(X) \mathcal{L}'_K(Y) \\ &= \sum_{J,K} \mathcal{L}'_J(X) \otimes \mathcal{L}'_K(Y) \\ &= (\mathcal{L}'(X) \otimes \mathcal{L}'(Y))_I \\ &= \mathcal{L}'_I(X \times Y) \\ &= \mathcal{L}_I(P \otimes c) \in \mathbb{Q} . \end{aligned}$$

□

REFERENCES

1. J. Bryant, S. Ferry, W. Mio, S. Weinberger, *Topology of homology manifolds*, Ann. of Maths. **143**, 435–467 (1996)
2. T.A. Chapman, *Simple homotopy theory for ANR's*, General Topology and its Applications **7**, 165–174 (1977)
3. M. Cohen, *Simplicial structures and transverse cellularity*, Ann. of Maths. **85**, 218–245 (1967)
4. S. Ferry, E.K. Pedersen, *Epsilon surgery theory I.*, In: Novikov conjectures, index theorems and rigidity, Vol. 2 (Oberwolfach, 1993), 167–226, Lond. Math. Soc. Lecture Notes **227**, Cambridge University Press (1995)
5. B. Hughes, L. Taylor, B. Williams, *Manifold approximate fibrations are approximately bundles*, Forum Math. **3**, 309–325 (1991)
6. H. Johnston, *Transversality for homology manifolds*, Topology **38**, 673–697 (1999)
7. L. Jones, *Patch spaces: a geometric representation for Poincaré spaces*, Ann. of Maths. **97**, 306–343 (1973)
8. R. Kirby, L. Siebenmann, *Foundational essays on topological manifolds, smoothings, and triangulations*, Ann. of Maths. Study **88**, Princeton University Press (1977)
9. N. Levitt, A. Ranicki, *Intrinsic transversality structures*, Pac. J. of Math. **129**, 85–144 (1987)
10. A. Marin, *La transversalite topologique*, Ann. of Maths. **106**, 269–293 (1977)
11. F. Quinn, *Resolutions of homology manifolds, and the topological characterization of manifolds*, Invent. Math. **72**, 264–284 (1983); Corrigendum **85** (1986) 653
12. ———, *An obstruction to the resolution of homology manifolds*, Michigan Math. J. **34**, 284–291 (1987)
13. ———, *Topological transversality holds in all dimensions*, Bull. Amer. Math. Soc. **18**, 145–148 (1988)
14. A. Ranicki, *The algebraic theory of surgery II. Applications to topology*, Proc. Lond. Math. Soc. **40**, 193–287 (1980)
15. ———, *Exact sequences in the algebraic theory of surgery*, Mathematical Notes **26**, Princeton University Press (1981)
16. ———, *Algebraic L-theory and topological manifolds*, Cambridge Tracts in Mathematics **102**, Cambridge University Press (1992)
17. C.P. Rourke, B.J. Sanderson, *On topological regular neighbourhoods*, Compositio Math. **22**, 387–425 (1970)
18. C.T.C. Wall, *Surgery on compact manifolds*, Academic Press (1970); 2nd edition, Mathematical Monographs and Surveys **69**, A.M.S. (1999)
19. S. Weinberger, *Nonlocally linear manifolds and orbifolds*, Proc. 1994 Zürich ICM, 637–647, Birkhäuser (1995)
20. J. West, *Mapping Hilbert cube manifolds to ANR's*, Ann. of Maths. **106**, 1–18 (1977)

H.J.: DEPT. OF MATHEMATICS
 UNIVERSITY OF MASSACHUSETTS
 AMHERST, MA 01003
 USA
E-mail address: johnston@math.umass.edu

A.R.: DEPT. OF MATHEMATICS AND STATISTICS
 UNIVERSITY OF EDINBURGH
 EDINBURGH EH9 3JZ
 SCOTLAND, UK
E-mail address: aar@maths.ed.ac.uk